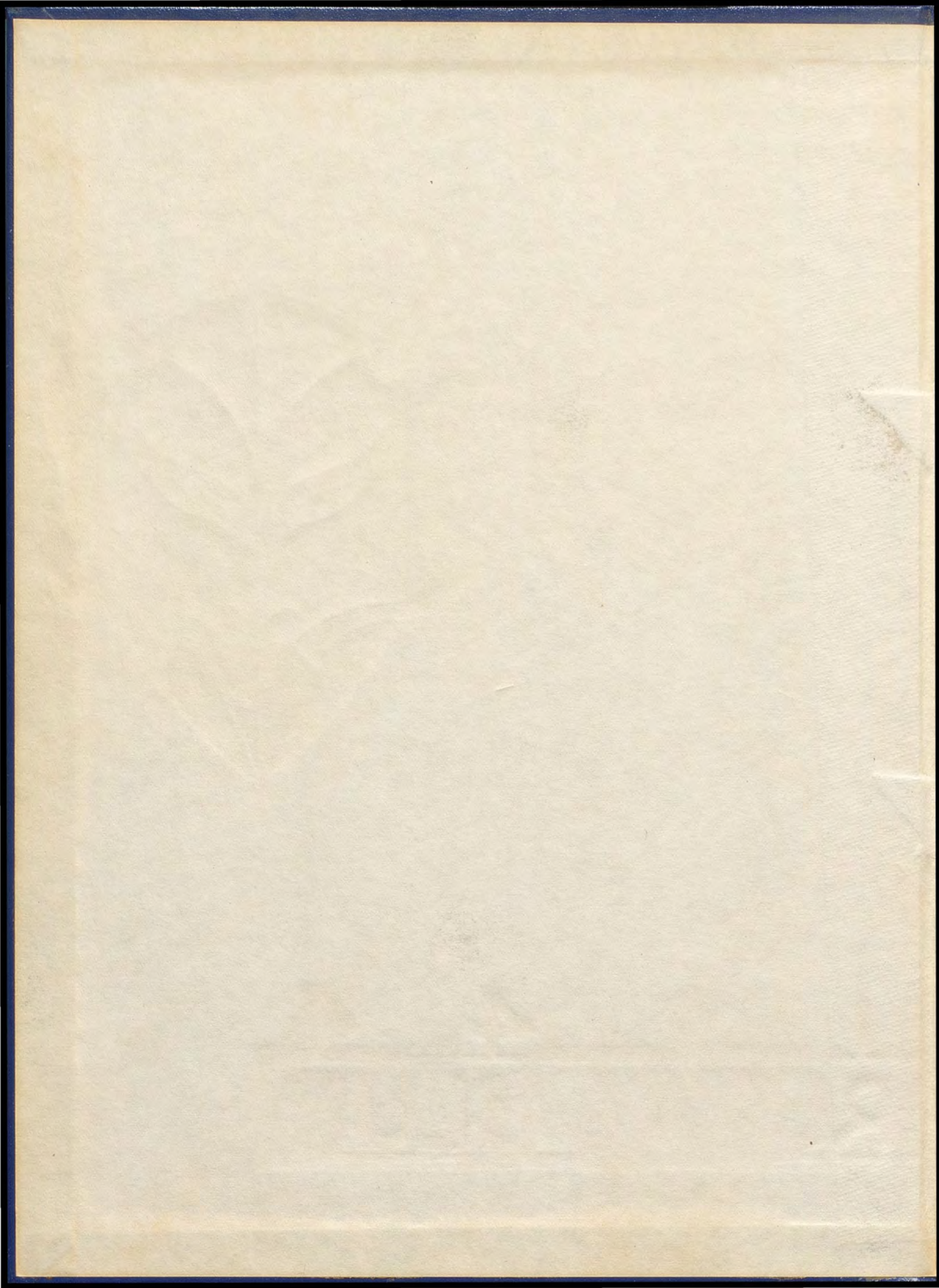
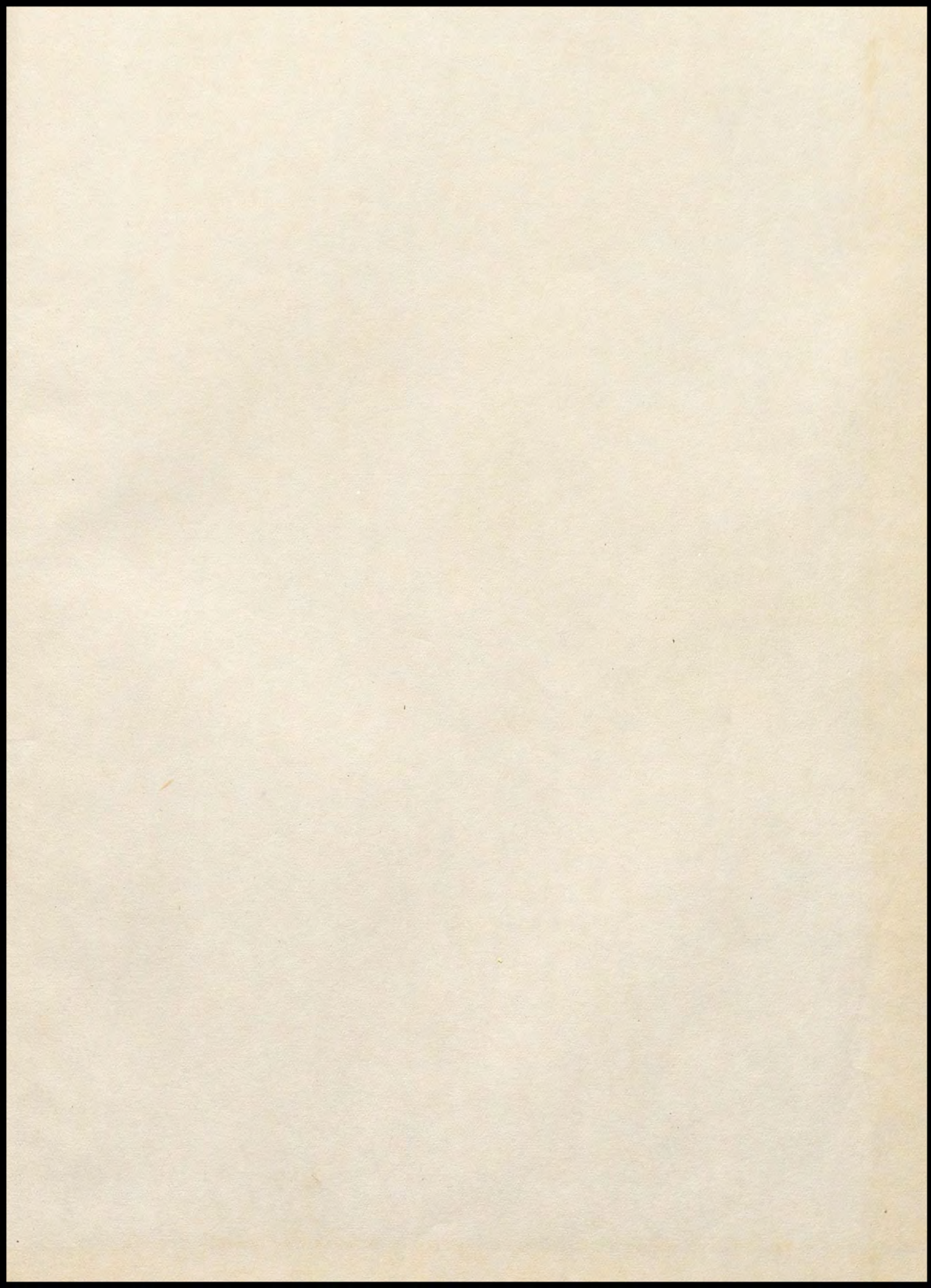


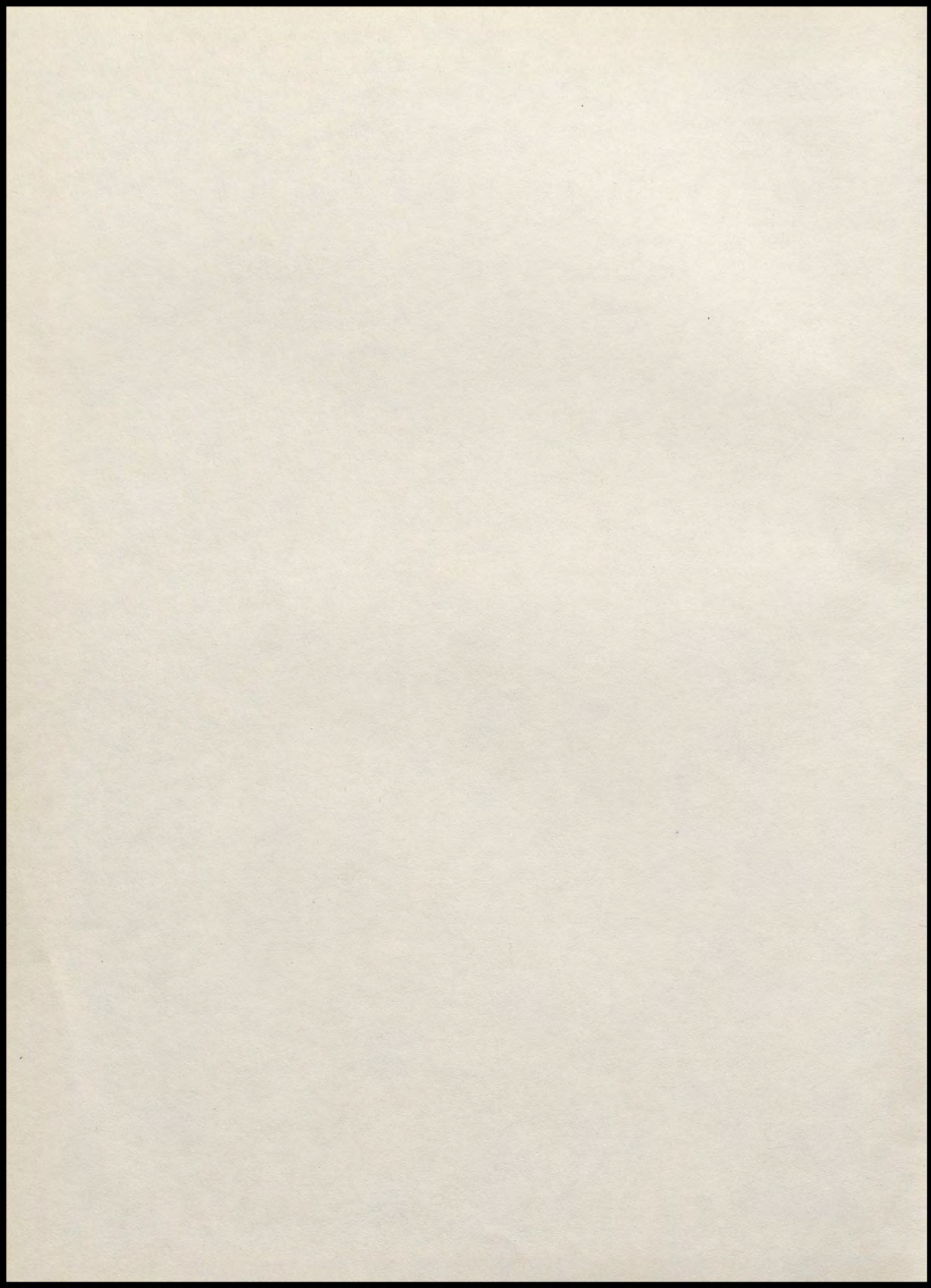


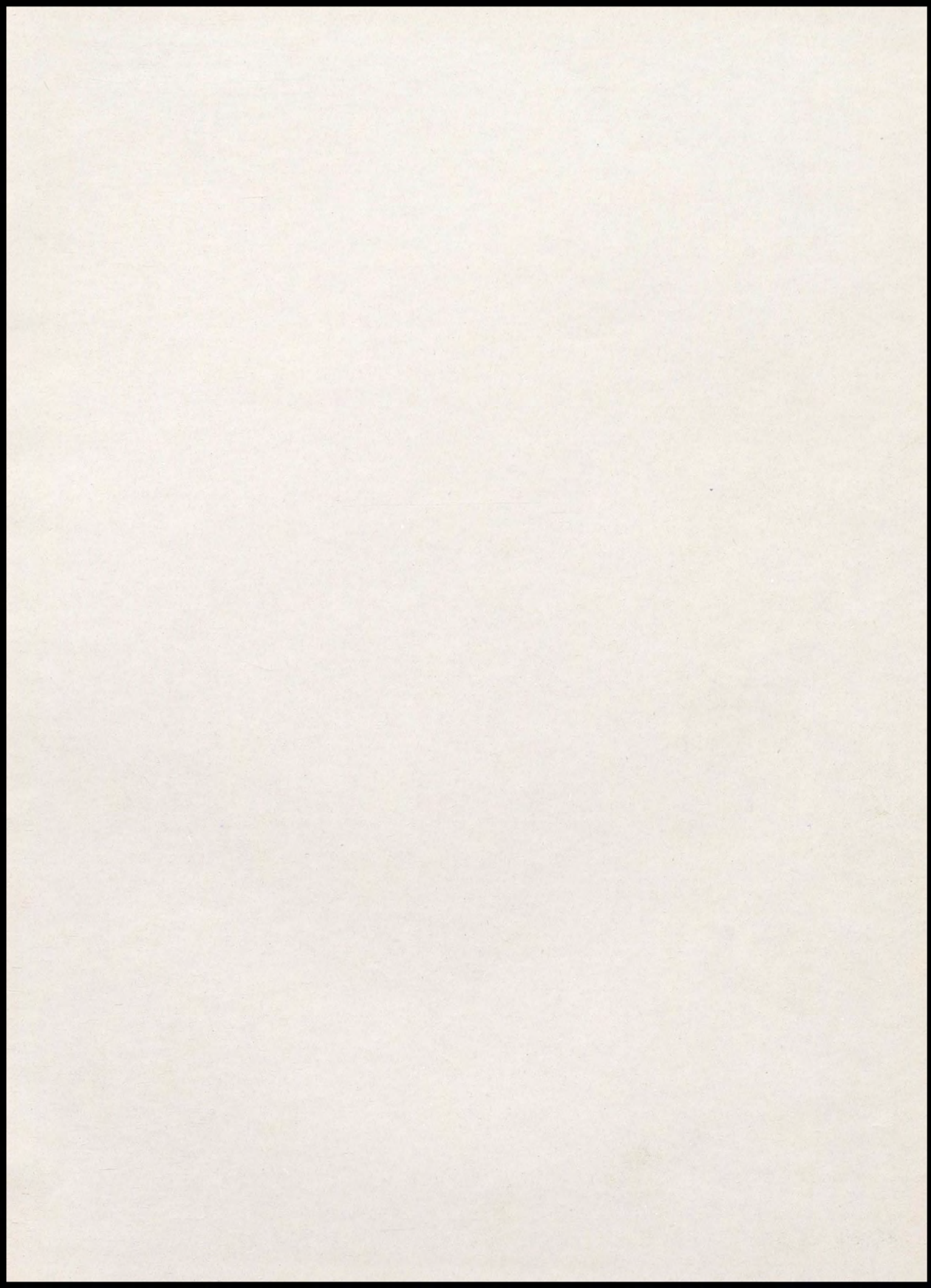
1944

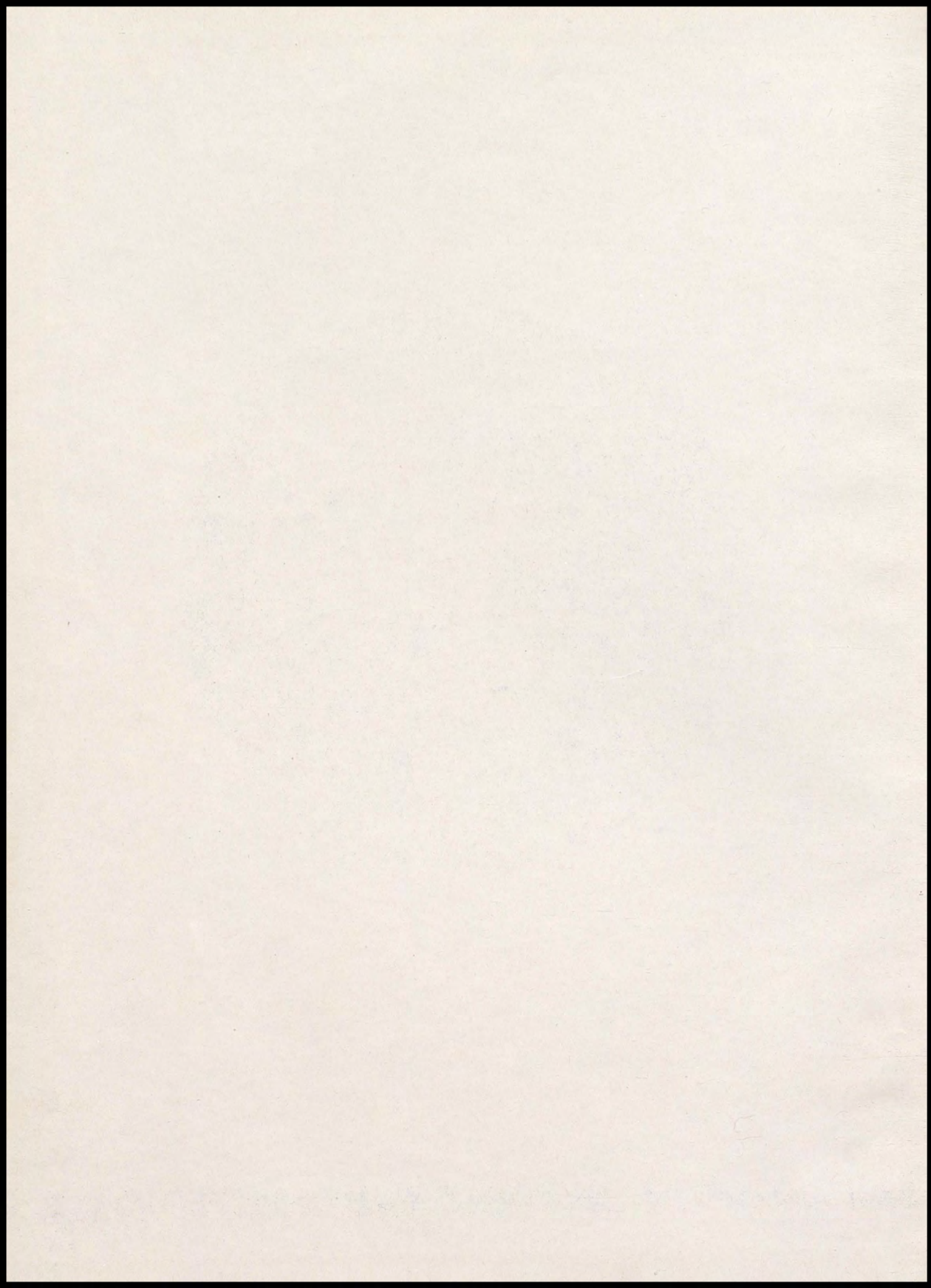
ROYAL BLUE

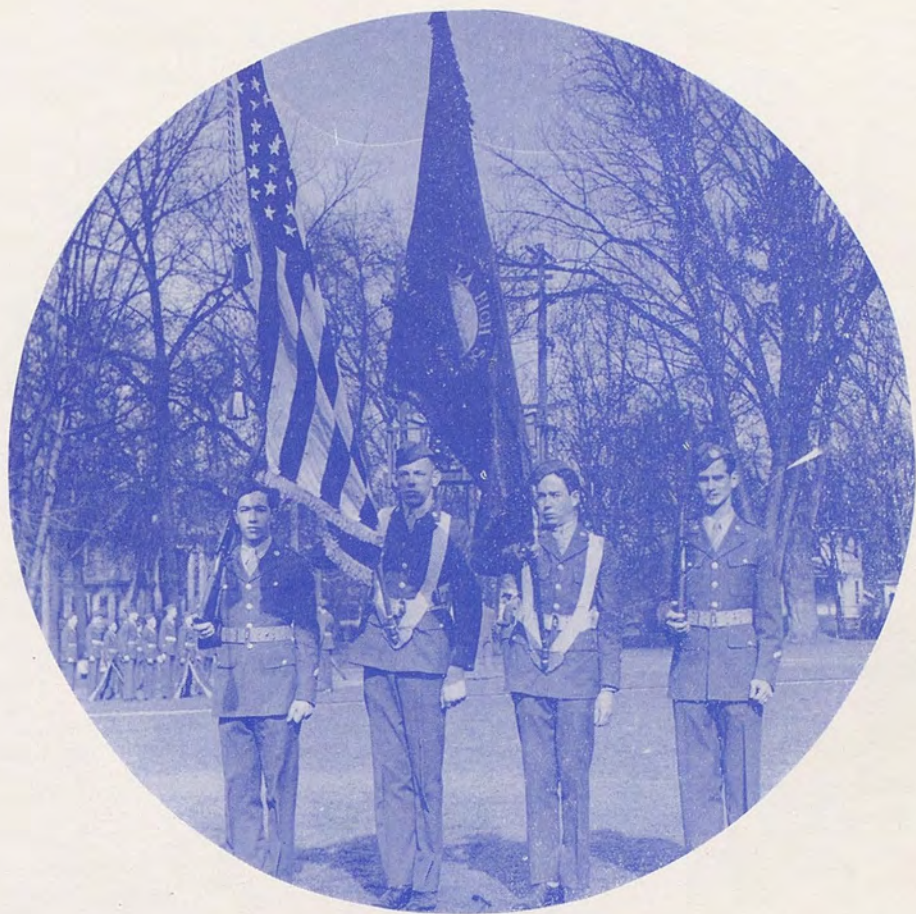
















1944
Royal Blue

Published by the annual staff
of Wa-Hi
Walla Walla, Washington

EDITOR

Burton Boylan

ASSOCIATE EDITORS

Madelyn Jameson

Maxine Lanchester



To those who have gone from our halls and classrooms to the battlefronts of this war, we dedicate the 1944 Royal Blue as a lasting record of events and activities of Wa-Hi in wartime.



PRO LIBERTATE
OMNIUM POPVLORVM



Administration



Back Row: Falk, Corn, Larson, Steelsmith, Hamm, Kirk,
Graham.
Middle Row: Peterson, Westacott, Allison, Moseley, Mc-
Cormick, Robison, Bulow.
Front Row: Yates, Reser, Tilley, Clark.

THEY SHOW US HOW

Ralph Emigh
Math.

Bess Kirk
Head of Math. Dept.

Laura Lee Robison
Dept. of Fine Arts

Grace Houghton
Health and P. E.

Mabel Graham
Commercial

Marian Bulow
Home Ec.

Myrtle Falk
English

Ivy Peterson
History

Mary Yates
Science
Math.

Dollie Corn
English

Mary Westacott
Head of Home Ec. Dept.

Helen Reser
School Nurse

Dessie Larson
English

Marguerite Moseley
Librarian

Hal Tilley
Dept. of Fine Arts

Clarence Steelsmith
Head Dept. Industrial Arts

Helen McCormick
Commercial
Dean of Girls

Harrison Clark
Head of Commercial Dept.
Boys' Advisor

Fay Hamm
Head of English Dept.

THEY SHOW US HOW

Thelma Farrelly
History

Lucille McIntyre
Head of Foreign Language

Agnes Little
English

Juliana Draper
Head of History Dept.

Frank Rogers
Sgt. Military

Paul Reed
Science

Ruth Dunn
Math.

Bernard Tack
Head of Science Dept.

Albert Haase
Commercial

Alice Kenyon
Science

Edna Haase
Sec. to Principal

B. E. Austin
History

Lillian Lindner
English and Latin

Meta Pfeiffer
English

Allen Reynolds
Math.
Attendance

Dean Lobaugh
Principal

Catherine Foster
Commercial

Wallace Wheeler
Health and P. E.

Back Row: Farrelly, Draper, Dunn, Kenyon, Lindner, Lobaugh, McIntyre.
Middle Row: Rogers, Tack, Haase, Pfeiffer, Foster, Little, Reed.
Front Row: A. Haase, Austin, Reynolds, Stevens, Wheeler, Emigh, Houghton.

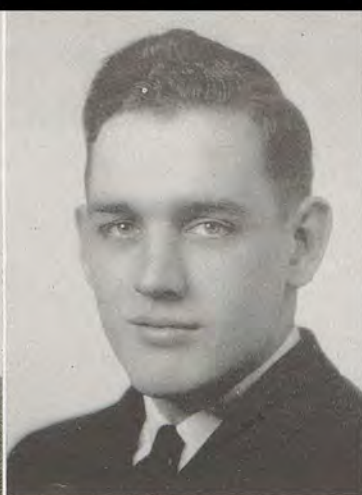




Dean Gehrett
President



Clinton Aiton
Vice President



Alan Berry
Secretary



Wesley Benefiel
Treasurer

THEY MAKE THINGS GO

Realizing more than ever the importance of democracy, Wa-Hi students continued their practice of democratic government by electing Dean Gehrett president of the studentbody; Clinton Aiton, vice president; Alan Berry, secretary; Wesley Benefiel, treasurer; and Bob Naimy, yell-king. Charlotte Wirth, Ernest Tucker, and Marilyn Corkrum capably assisted Bob Naimy. Upon Wesley's graduation in mid-term, his place was filled by Harold Myers.

The following commissioners were appointed by Dean Gehrett: Richard Nightingale, Justice; Sherman Mitchell, Assemblies; Wayne Fondahn, Buildings and Grounds; Eunice Maier, Interschool Relations; Neil Follett, Halls; Charlotte Wirth, Organizations; Virgil Whitely, Fire Control; and Willa Dean Ogden, Finance. These commissioners and Shirlee Winget, president of the Girls' Federation, Bob Klicker, president of the Boys' Federation, and Wandalee Fleck, co-editor of the Journal, composed the student cabinet.

One of the major events of the year was the opening of the Wa-Hive, a teen age club. Student admission was obtained by the purchase of a 50-cent ticket good for one semester. Phyllis Robinson did a very good job as acting commissioner of the club.

Money was appropriated by Legislative Assembly to landscape the Palouse Street entrance.

Instead of broadcasting from the Industrial Arts Building, the weekly Wa-Hi broadcast is heard from the stage in the auditorium. This arrangement has proved to be much more convenient.

In special assemblies held during the Fourth War Loan, the students bought over \$30,000 worth of bonds and stamps. This entitled them to a half-day entertainment at school, instead of the regular afternoon classes.

The Gimmel Teth Club handled the reservation of athletic season tickets for parents and businessmen. The purchase of one of these tickets entitled the holder to a reserved seat for the season. Due to the town's support of the games, the finances of the high school are better than they have been for several years.

The cafeteria operated by the student body is still serving many students even through the difficulties of rationed food and rising prices. The Book Store is still operating very successfully with the help of various students.

1ST SEMESTER
COURT

Front Row: Throop,
Kirkpatrick, Batey.

Back Row: Walker,
Nightingale,
Ellis, Meinhart.



2ND SEMESTER
COURT

Front Row: Finne-
gan, Duckworth,
Shuham.

Back Row: Nightin-
gale, Gilmore,
Fahey.



STUDENT CABINET

Front Row: Gehrett,
Robinson, Ogden,
Fleck, Wirth.

Back Row: Berry,
Naimy, Fondahn,
Nightingale,
Aiton, Follet.





Shirlee Winget
President

Denise Bergevin
Vice President

Rosemarie Hubert
Secretary

Marjorie Pifer
Treasurer

GIRLS' CABINET

Anderson, Pieper, Brock, Noble

GIRLS' COUNCIL

Front Row: Fleck, Hamm, Benefiel, Johnson, Rimpler.
Back Row: Valaer, Dudley, Buck, DeBoer.

THEY CARRY ON

The Girls' federation has achieved another successful year of furthering friendship among Wa-Hi girls. Shirlee Winget was chosen by the girls to be president. Eunice Maier took over vice-president Denise Bergevin's duties when Denise left for college. The other officers were Rose Marie Hubert, secretary, and Marjorie Pifer, treasurer.

A few of the monthly assemblies consisted of a style show, an open-forum on courtesy, a talk by Evelyn Lammers of McCaw Hospital, a one-act play, "The Dyspeptic Ogre," and a talk by Ensign Bernice Simet of the Spars.

The first social affair was the annual fall party put on by the sophomores. It was followed later by the girls' transfer parties to help the new girls at Wa-Hi to get acquainted with other girls. In the spring the senior tea was once again given by the junior girls; and in May, the party for the incoming freshmen was given by the freshman girls.

An important task which the girls have undertaken this year is the sending of newsletters to former Wa-Hi students now in the service. These letters, containing news of Wa-Hi and the home town, are made possible by contributions made by Wa-Hi students. In this and many other ways, the girls of Wa-Hi are contributing to the war effort.

THEY CARRY ON

The Boys' Federation, advised by Mr. Harry Clark, accomplished a great deal this year in spite of war conditions. President of the Boys' Federation was Bob Klicker, with Charles Maiden vice president. Ray Bell became secretary when Dave Binder was called into the service. When John Stephens left at mid year, the treasurer's duties were taken over by Jerry Walker and the chairmanship of the Hospitality Committee by John McInturff.

The position of Commissioner of Assemblies was filled by Dick Turbak who brought the boys much interesting entertainment. Under his capable supervision, each class presented an assembly. The Froshers' "Truth or Consequences" program revealed several interesting and unknown facts about the male members of Wa-Hi's student body. As a sample of the talent they discovered, the boys had Ralph "Sinatra" Ruff do his stuff for the girls. The junior assembly presenting the air-base band was also highly lauded.

Probably the most outstanding achievement of the Boys' Federation during the past year was the starting of the Alma Mater Mail. This is a paper written by representatives of the Boys' and Girls' Federations for servicemen and women who formerly attended Wa-Hi.

Plans are being made by the Boys' Federation for the enlargement of the Boys' Lounge for next year.

Bob Klicker
President

Dave Binder
Treasurer

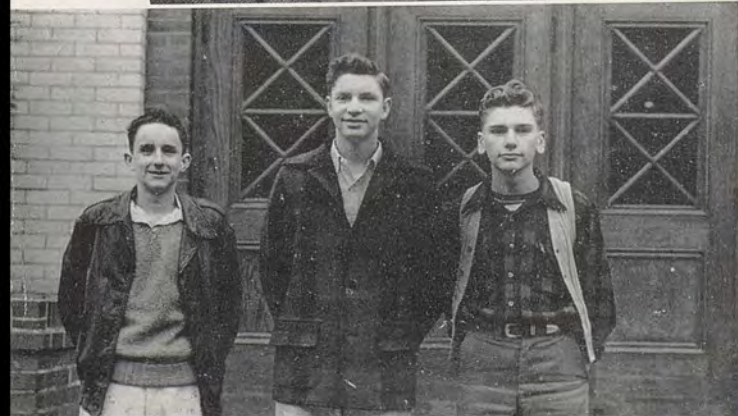
John Stephens
Secretary

COMMITTEE CHAIRMEN

McQueen, McInturff, Baslee

CABINET

Turbak, Baslee, Klicker, Stephens,
McQueen, Binder





Classes



1ST SEMESTER OFFICERS

Dick Turbak—President
Eugene Soper—Secretary-Treasurer
Frances Chapman—Vice President

2ND SEMESTER OFFICERS

Elaine Cation—President
Delores Kralman—Secretary-Treasurer
Bob Coleman—Vice President

SENIORS

Wa-Hi's seniors have now completed four years of high school life and are leaving the scene of their activities with mingled relief and regret. Members of this class, throughout their years at Wa-Hi, have helped to further student government; to publish the Journal and the Royal Blue; to present the all-school plays; to furnish entertainment in assemblies and other programs; to promote Boys' and Girls' Federation activities; and to take an active part in both intramurals and varsity sports.

The Class of '44 worked diligently toward graduation four years. When that time came they found their ranks had been greatly depleted because so many boys had gone into the service and because several of the class, having earned enough credits to graduate in mid year, had gone on to college. Even so, the graduating class numbered over two hundred.

Chosen to lead them for the first semester were Dick Turbak, Frances Chapman, and Eugene Soper, as president, vice president, and secretary, respectively. During the second semester Elaine Cation, Bob Coleman, and Delores Kralman filled these same offices. Representatives to Girls' Council were LaVonne Buck, Lorraine Johnson, Francene Pauly, and Carol Morris, while Lawana Mae Pieper and LaVonne Buck served on Girls' Cabinet. Bob Coleman and Ray Bell were elected to Boys' Council. Miss Marguerite Mosely served as adviser for the Class of '44.

Graduation exercises were set for May 25 with Baccalaureate the preceding Sunday. Dr. Ralph E. Tiejje, President of Eastern Washington College of Education at Cheney, was chosen as Commencement speaker, Rev. Arthur A. Vall-Spinosa was selected to deliver the Baccalaureate address.

Jack Ablott
Football 3, 4; Hi-Y

Clinton Aiton
V-Pres.; Class Pres. 3;
Basketball 3, 4.



Arlene Anderson
Gimmel Teth

Hallie Arbogast
Victory Corps 3; Lib.
Assistant; N.H.S.



Gordon Arthurs
F.C.A.; Transfer—Waits-
burg; Band 1, 2, 3, 4;
Football 4.

Ruth Barney
Leg. Assembly 3



Marilyn Batey
Student Court; Girls' Cab-
inet; Soromia Club

Bernice Beeson
Sponsors 4; Sports Club;
A Capella



Kenneth Beeson
Annual Sales Staff 4;
Equites; Leg. Assembly
3, 4.

Ray Bell
Boys' Fed. Sec. 4; Foot-
ball 3, 4; Basketball 3, 4;
Track 3, 4.



Wesley Benefiel
S. B. Treas. 4; Basketball
3, 4

Lloyd Bennett
Officers Club



Bill Bennington
Band 1, 2, 3, 4; Officers'
Club 4; Leg. Assembly 1.

Denise Bergevin
Sponsor; Girls' Fed. Vice-
Pres. 4.



Bill Berney
N.H.S.; Equites.

Anna V. Berreth
Lib. Assistant 2, 3.



Alan Berry
Sec. 4; Football, Basket-
ball; Baseball.

Franklin Beswick
Transfer—Portland



Dave Binder
Football 3, 4; Basketball
3, 4.

Harold Bishop
Officers' Club 4; Football
4; Rifle Team 3, 4.

Burton Boylan
Annual Sales 1, 2, 3, 4;
Annual Business Mgr. 3;
Annual Editor 4; N.H.S.

La Vonne Buck
Sponsor 4; Gimmel Teth 2,
3, 4; Girls' Council 4;
Journal Staff 4.

Mary Bughi
Sponsor 3, 4.

Peter Burkhart

Lois Burnet
"Count and Coed" 1;
Girls' Glee 1, 4.

June Campbell
Lib. Assistant

Geraldine Case
A Capella 3, 4; Girls'
Cabinet 3.

Nona Cass

Elaine Cation
Sports Club Pres. 4;
Girls' Council 4; N.H.S.;
Class Pres. 4.

Frances Chapman
Transfer—Umatilla; Girls'
Cabinet 4; Class V-Pres. 4.

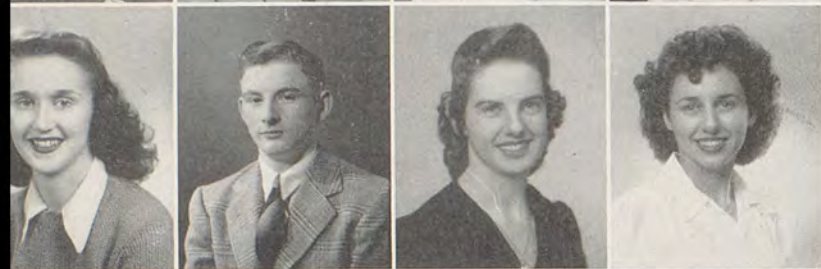
Charles Chase
Basketball 3.

Francis Christiano



James Coe

Bob Coleman
Annual Business Mgr. 4;
Equites; Boys' Cab.;
Class Vice Pres. 4.



Susan Cooper
Camera Club 1; Fencing 1;

Marilyn Corkrum
Yell Team 4; Gimmel
Teth 4; Sponsor 2, 3, 4.



Billie Cox

Everell Cummins
Debate 2, 3; Leg. Assembly
3; "Arsenic and Old Lace"
4.

Dolores Cunningham
German Club; Lib. Assis-
tant 3, 4.

Phyllis Curcio
Sponsor 3, 4; Leg. Assem-
bly 3, 4; Journal Staff 4.



Alene Davis

Marjorie Dawson
Beau Chez Club 3; Leg.
Assembly 1.

Dora Dicus

Margaret Dillon
Girls' Glee 3, 4; Leg.
Assembly 4.

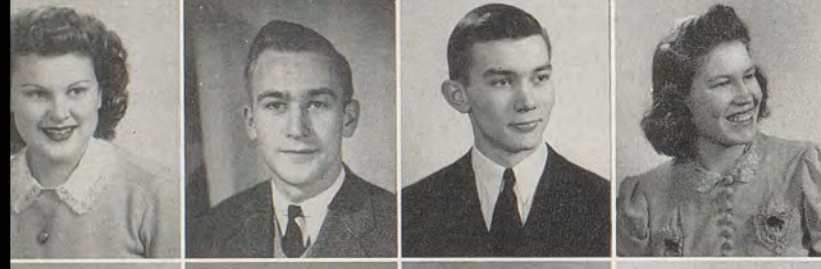


Elaine Dirks
Mixed Chorus 2, 3; Girls'
Chorus 4.

Loretta Dippolito
Girls' Glee.

Betty Docres

Kathryn Drake
Girls' Chorus; Transfer—
Texas.



John Drumheller
Hi-Y Club; Class Pres. 2;
Equites Club; Track

James Esary
N.H.S.; Journal Ed. 4.

Betty Jo Fanning
Leg. Assembly; Sponsor
2, 3, 4; Home Ec. Club.

Wandalee Fleck
"Ladies of the Jury";
Associate Ed. Journal;
N.H.S.; Sponsor Lt.; El
Adrea.



Margie Fletcher
Transfer—Portland.

Neil Follett
N.H.S. 3, 4; Baseball 3, 4;
Football 3; Band 1, 2, 3.

Wayne Fondahn
Baseball 3, 4; Football;
Basketball; Leg. Assembly;
Student Cabinet.

Lydia Frank

Rose Frank

Helen Garrett
Sponsor 1, 2, 3; El Adrea;
Journal 3, 4.



Dean Gehrett
S.B. Pres. 4; Class Pres. 3;
Football 4; Basketball 3, 4;
Track 3, 4.

Louise Gilkerson
Capt. Girls' Rifle Team 4;
Girls' Chorus.

Violet Gilman
Lib. Assistant 1, 2, 3, 4.

Marjorie Hamm
Gimmel Teth 3; Sponsor
3, 4; Girls' Council 4.

Jeannie Harding

Ray Harding
Rifle Team 3, 4; A Cape-
la; Officers' Club.

Phyllis Hart
Girls' Cabinet 4; Annual
Staff 4; Girls' Sports Club
3, 4; Cap & Gown 4.

Louetta Hoffman
Leg. Assembly 4.

Rosemarie Hubert
Sec. Girls' Fed. 4; N.H.S.;
Pres. El Adrea 4; Girls'
Council 3.

Madelyn Jameson
Transfer—Idaho; Leg.
Assembly 4; Associate Ed.
Royal Blue 4.

Hilda Johnson
Leg. Assembly 1;
Soromia Club

Dick Jones
Officers Club 4; Drum
Major 3; Fencing Squad 1;
"Ladies of the Jury" 3.

Emmie Kato
Transfer—Sacramento

Beatrice Kilbourne
Beau Chez
Girls' Rifle Team

Bob Klicker
Boys' Fed. Pres.; Football
3, 4; Baseball 2, 3, 4;
W.W. Club

Mary Ellen Knouf
A Capella 2, 3; Girls'
Glee 2, 4

Arthur Krebs
F.F.A.; Baseball Mgr. 2, 3;
W.W. Club

Marvin Langton
Glee Club

Delpha Loney
Sponsor 2, 3, 4; Gimmel
Teth 2, 3, 4; Leg. Assem-
bly 1, 2, 3

Marlyn McCabe
Transfer—Montrose, S. D.

Marian McCauley
El Adrea, 1, 2, 3

Robert McQueen
Head of Intramurals 4

Dorothy Hill
Sponsors 3, 4.

Esther Holderman
"Count and Coed" 1;
Lib. Assistant; Girls Sextet
1; Glee Club 2, 4.

Dorothy Ann Humphrey
Gimmel Teth 1, 2, 3, 4;
Sponsor 2, 3, 4; Student
Court 2; Girls' Council 1, 4.

Phyllis Jansen
Soromia; N.H.S.; Leg.
Assembly 4; Girls' Fed.
Committee.

Lorraine Johnson
Leg. Assembly 1;
Girls' Council 3;
"Count and Coed"

Rosalee Jordan
Girls' Glee 4; Girls'
Rifle Team 3

Edwin Kessler
German Club; Leg.
Assembly 2

Morris Kincheloe

Betty Knaus
"Count and the Coed" 1;
Leg. Assembly

Delores Kralman
Leg. Assembly 2; Home
Ec. Club 1, 2, 3; Sec.-Treas.
Class 4

Maxine Lanchester
N.H.S. 3, 4; Soromia 2, 3;
Associate Ed. Royal Blue;
Student Court 4;
Valedictorian

Dolores Loney
Soromia 2

Edith Long

Mary McCabe
Transfer—Montrose, S. D.

Kenneth McLaughlin

Bonnie Jean Mackin
Journal Staff 4;
A Capella 2, 3, 4





Charles Maiden
Leg. Assembly 1, 2;
F.F.A. 1, 2, 3, 4;
Boys' Fed. V-Pres. 4;
Baseball 3, 4.

Eunice Maier
Student Cab. 4; Student
Court 2; Girls' Cab. 4;
Girls' Fed. V-Pres. 4;
N.H.S. Pres. 4

Genida Manuel
Rifle Team 2, 3, 4; Leg.
Assembly 1, 2, 3.

Betty Mays
Gimmel Teth 1, 2, 3, 4;
Leg. Assembly 4; Journal
Staff 2



Frances Mayo
Girls' Cab. 4; Girls'
Council 4; Leg. Assembly
1, 4

Margaret Merklin

Floyd Miller

Sherman Mitchell
Baseball 1, 2, 3; Basketball
3, 4; Band 1, 2, 3; N.H.S. 4

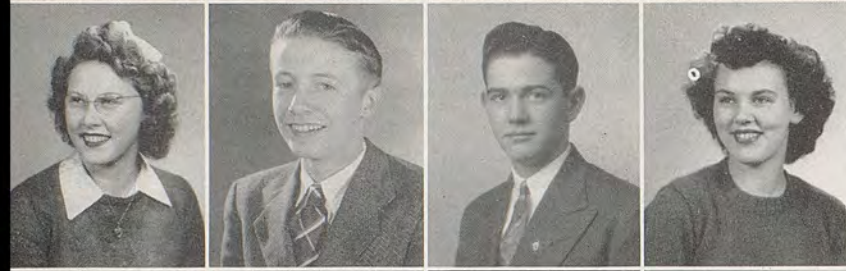


Carol Morris
N.H.S. 3, 4; Leg. Assembly
3, 4; Journal News Ed.
and Artist 3, 4; Girls'
Council 4

Harold Myers
Baseball 3, 4; Boxing 3, 4;
S. B. Treas. 4; Math Club
2, 3, 4

Robert Naimy
Yell King 4; Football 2,
3, 4; "Arsenic and Old
Lace"

Joyce Neel
Student Court 2, 3; Girls'
Cab. & Council 4; N.H.S.
3, 4; Sponsor 2, 3, 4.

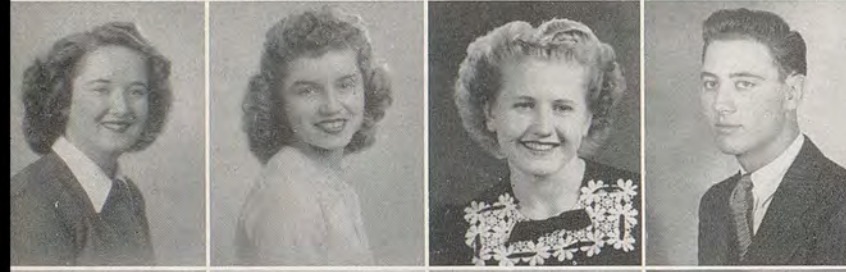


Lois Nelson
Transfer—Nebraska

Herbert Nightingale
Leg. Assembly 2; Equites
3, 4; N.H.S. 4; Band
1, 2, 3, 4

Richard Nightingale
Chief Justice 4; Student
Cab. 4; Class Pres. 3;
Basketball 3, 4; N. H. S.;
Officers Club 4

Marilyn Nordstrom
Sponsors



Willa Dean Ogden
Girls' Cab. 2, 4; N.H.S.
Pres. 4; Soromia Pres. 3;
Com. Finance 4
Salutatorian

Norma Oswald
Leg. Assembly 2;
G. Glee 3

Ruth Otto

Robert Ovens



Willis Page
Football 4; Track 4.

Harlan Parks
Equites

Francene Pauly
Girls' Cab. 4; Soromia;
"Arsenic and Old Lace";
Girls' Council 4

Rita Periman
Lib. Assistant



Louis Petrelli

Lawana Pieper
Girls' Cab. 4;
Leg. Assembly 3

Marjorie Pifer
N.H.S. Treas. 4; El Adrea
4; Girls' Fed. Treas. 3;
Sponsor 2, 3, 4

Howie Phillips
Band 1, 2, 3, 4

Elsie Pojorlie

Pauline Pojorlie



Gordon Riess
Leg. Assembly 4

Joyce Reiswig
Girls' Cab. 1; Sports Club

Betty Rink
Beau Chez
Lib. Assistant

Dorothy Robison
Girls' Cab. 4; Leg.
Assembly 4; Girls'
Rifle Squad 3

Odalee Raunsaville
Journal 4; Lib. Assistant
3; Girls' Rep. 2

Marguerite Sharpe

Harry Smedes
Football; N.H.S. 3, 4;
Track; Band 1, 2, 3, 4;
'Ladies of the Jury'

Josephine Stalcup
Glee Club

Betty Steen

Mildred Stevens
Sponsor 4; Girls' Cab. 2;
Leg. Assembly 1, 4;
Newscaster

Ernest Tucker
Yell Squad 4;
Officers' Club

Marie Vanderpool

Beth Wills

Esther Winn

Elizabeth Woodworth
Girls' Rifle Team; A
Capella 3; 'The Count and
Coed' 1; G. Glee 1

La Nita York
Annual Staff 4; Leg.
Assembly 3

Marjorie Zigman
Sponsor Capt. 4; Beau
Chez 3; Leg. Assembly 1

Bob Stokes
Transfer—Montana

Phyllis Robinson
Wa-Hive Commissioner 4;
El Adrea Pres. 4; Girls'
Cab. 4; N.H.S. 4

Jim Robison
Track Team 1; Boxing
Team 1; Rifle Team 4;
Leg. Assembly 1; Equites
Pres. 4

Richard Schaefer
Boxing; Football 4

Bob Shirrod
Camera Club 1

Bruce Southern
Officers' Club

Lois Stebner
Leg. Assembly 2; Journal
Staff 3, 4; Sports Club
1, 2, 3, 4.

John Stephens
Football 2, 3; Basketball
2, 3; Track 2, 3; Sec.
Boys' Fed. 4

Lynn Thirtyacre
Knights of Trident 1; Rifle
Team 4; Journal 2

Dick Turbak
Class Pres. 3, 4; Football
2, 3, 4 Capt. 4; Boys' Fed.
Com.; Leg. Assembly 3

Virgil Whiteley
F.F.A. 1, 2, 3, 4; Leg.
Assembly 3; Fire Chief 4;
Student Cab. 4

Shirlee Winget
Girls' Fed. Pres. 4;
N.H.S. 4; El Adrea;
Sponsor; Student Cab. 4

Charlotte Wirth
N.H.S. 3, 4; Yell Squad 4;
Student Cab. 4; Class
Pres. 2; Sports Club Pres. 3

Elaine Wright
Home Ec. Club 2, 3;
Sponsor 3, 4; Leg. As-
sembly 3

Marie Zier
Girls' Council 1

Irmalee Manley
Sorumia

Ferrin Walker





Cap and Gown Committee
Hart, Cation



Seniors cont.
Phyllis Day



Salutatorian and Valedictorian
Ogden and Lanchester

CAMERA SHY SENIORS

Bob Anhorn
 Nesmith Ankeny
 Jim Bauer
 Gordon Bland
 Nellie Butler
 Kenneth Clemensen
 Bob Demory
 Don Dodd
 Dean Eggers
 Lois Evett
 Bob Fuller
 Mary Gallington
 Bob Garrett
 LaVerne Gerking
 Earl Gordon
 Lester Green
 Shirley Gross
 Jim Harris
 Jerry Hart
 Mabel Henderson
 John Kleinbach
 Allen Kramer
 Varice Lalumondier

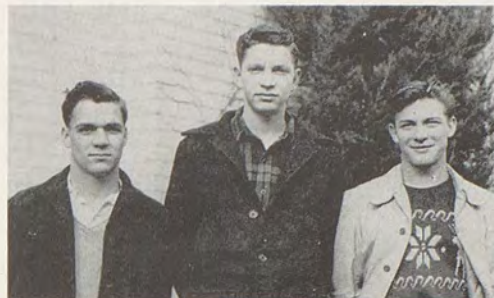
Willa Jean Lage
 Carolyn Lamperti
 Mary Lou McKillip
 Betty Mace
 Gladys Mausier
 Maxine Mayberry
 Loreda Mele
 Jim Merkle
 Phillip Merklin
 Stuart Reynolds
 George Schaub
 Claudine Smith
 Eugene Soper
 Oscar Stone, Jr.
 Billie Stratton
 Paul Terhaar
 Jeannie Thompson
 Shirley Torrey
 Marjorie Turley
 Frank Turner
 Edna Vaughan
 Roma Weaver
 Allen Williams

James Wilson

JUNIORS

1ST SEMESTER OFFICERS

Bell, McInturff, Noble



2ND SEMESTER OFFICERS

Woodhall, Campbell, Sporleder



The junior class is outstanding, for it ranks high in scholarship as well as in school activities.

Junior class officers for the first semester were president, Kenny Noble; vice president, John McInturff; and secretary-treasurer, Roy Bell. Second semester officers were Corleen Sporleder, president; Gloria Woodhall, vice president; and Marie Campbell, secretary-treasurer. Representatives to Girls' Cabinet were Doris Anderson, and Lois Humphrey. Loleta Rimpler, Elinore DeBoer, Joan Rader, and Donna Mahan were on the Girls' Council. Representative to Boys' Cabinet was Warren Baslee. Justices on the Supreme Court for the first semester were Charlotte Throop and Jerry Walker; for the second semester, Pat Finnegan and Ronald Duckworth.

The juniors led the honor roll the first quarter with 26, as well as the second quarter with 33! Betty Hopper, Irene Krebs, Charlotte Throop, and Betty Destito received straight "A's."

Clayton Michaelis was a radio announcer. Many Juniors helped produce the Journal and the Royal Blue.

Elaine Klavano, John McInturff, Vivian Swanson, Corleen Sporleder, and Ethelmae Allen were appointed to serve on various Wa-Hive committees.

Juniors making the varsity football team were Jerry Walker, Bill Van Atta, Don Wood, Roy Bell, and Joe Gilliam. Outstanding in basketball were John Heath, Joe Gilliam, and Bob Plucker; in baseball, Dick Frank, John Heath, and Bob Plucker; in track, Kenny Noble; and in boxing, Roy Bell, Mel Haas, Eugene Pope, and Dick Frank.

Supervised by Miss Falk, the juniors have proved to be strong and reliable as a class and have shown every indication of being the same when they become Seniors.

Front Row: Brittain, Willis, Moore, Fehrenbacher, Lybecker, Brashear, Tedholm, Bishop.

Middle Row: Miller, Jeglin, Wood, Zwanzig, Gradwohl, Skubinna, Sheldon.

Back Row: Locati, Appling, Barrows, Walker, Ruff, Stackpole, Eggers.

Front Row: Bailey, Spencer, Hope, Shaw, Clark, Sarver, Henline, Lindelien.

Middle Row: Nishida, Eagon, Jacky, Ashworth, Leek, Bramlett, Baird.

Back Row: Van Atta, Hull, Lightfoot, Wallace, Schessler, Corker, Williams, Krupsky.

Front Row: Dolle, Pcsey, Benzel, Davis, Campanelli, Frieske, Cockran, Hartley, Pope.

Middle Row: Swartz, Beechincor, Gump, Harding, Reavis, Storey, Mitchell, Noble.

Back Row: Michaelis, Croft, Plucker, Whitehouse, Gilliam, Turner, McInturff, Nelson, Ross.

Front Row: Rehberg, Leidl, Skelton, Campbell, Brunton, Bell, Roseboro, Frank, Haas, Alexander.

Back Row: Mitchell, Duckworth, Daniels, Hoelscher, Hahn, Freepson, Fouts, McKay, Reed.

314

Front Row: Berland, White, Weed, Burke, Mang, Burkhart, Hopper, Elia, Pfaffle.

Middle Row: Southern, Fairchild, Santo, Cornelius, Woodhall, Klaus, Wray, Bacon, Howard.

Back Row: Froese, Kissenger, May, Humphrey, Rader, Royster, Trout, Hamilton, Hiller.



316

Front Row: Lee, Carter, Taggart, Heimbigner, D. Anderson, Livengood, Rimpler, Palmer, Davis, Fleucken.

Middle Row: Apple, Beck, Wilson, Jeffers, Leeper, Wolfe, Flaherty, Klavano, Grassi, Braden.

Back Row: Chandler, Lindberg, Smith, Harrison, Owens, De Boer, Thompson, Finnegan, Chapman, Long.



317

Front Row: Evander, McDonald, Young, Pollard, Bulla, Anhorn, Sporleder, Throop, Allen.

Middle Row: Isitt, Elliott, Krebs, Destito, Bogle, Fowler, Campbell, Mulhair, Rich.

Back Row: Ward, D. Ausman, McFall, Kidwell, Willman, Maxson, Frank, McCulloch, Palmer.



318

Front Row: Lutz, Henzel, Knight, C. Anderson, Gard, Parsons, Follett.

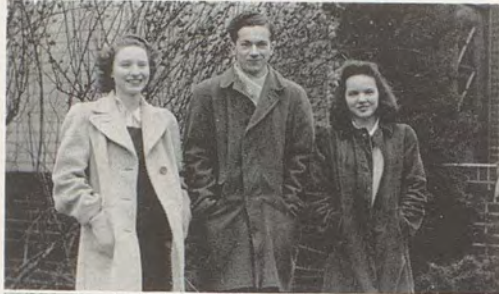
Middle Row: Green, McIntyre, Foster, D. Ausman, Valentine, Mahan, McKillips.

Back Row: Griffin, Hill, Butler, Eldridge, Doyle, Mathison, Bowman.

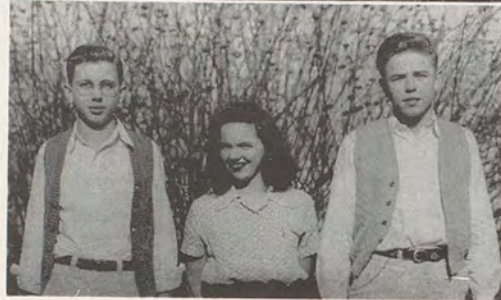


SOPHOMORES

1ST SEMESTER OFFICERS
McLaughlin, Ellis, Benefiel



2ND SEMESTER OFFICERS
Maier, Benefiel, Fuller



The sophomores are not only proud of being the largest class in Wa-Hi, but also of the work which they have accomplished.

Chosen to lead them the first semester were Dick Ellis, president; Jeanne Benefiel, vice president; and Billie B. McLaughlin, secretary-treasurer. Eugene Maier, Don Fuller, and Jeanne Benefiel filled these positions during the last half of the year. Elected to serve on Boys' Cabinet were Bill Dement and Jim Aylward. Barbara Brock was the representative to Girls' Cabinet. Girls' Council members were Rae Jean Wilson, Mary Ellen Valaer, Betty Rae Anderson, and Loretta Rimpler. Appointed to render the sophomore opinions for the Student Court were Katherine Kirkpatrick, Dick Ellis, Mary Shuham, and Duane Gilmore.

Many sophomores showed their interest in the school by supporting its various activities. Duane Gilmore and Mike Kenny played on the varsity football team. Jack Dusenberry was the manager of the basketball team. The class was represented on Wa-Hive committees by Jeanne Benefiel, Gordon Jaynes, and Mary Harvey. Helping to make the Daily Journal a success were Shirley Jean Brown and Ernest Merklin. Dick Ellis contributed his skill in photography to the Royal Blue staff and Marilyn McEvoy and Barbara Jamieson displayed their unusual musical abilities in assemblies. In the cast for the all-school play were Jim Mitchell and Duane Gilmore. Eloise Dorsey, Carl Hebenstreit, and Charles Hall were the sophomore newscasters for the year.

With two years of experience behind them, the members of the sophomore class, supervised by Miss Juliana Draper, are rapidly becoming ready to take over their duties as the leaders of Wa-Hi.

Front Row: Kimmerly, Altergott, Page, Holderman, Hunting, Gray, Jacobus, Koehler, Dodd, Jamieson.

Middle Row: Blackman, Rookstool, Martin, French, Campanelli, Dorsey, Rogers, Chase, Filan, Mrs. Dunn, McLean, McLoughlin.

Back Row: Leeper, Perier, Frank, Brooks, Williams, Anderson, Wellington, Arthurs, Long.



Front Row: Frank, Martin, Naucier, Edinger, Strode, Williams, Decker, Torrey.

Middle Row: Hoyt, Hall, Childers, Aylward, Lindley, Koehler, Cundiff, Amery, Mrs. Farrelly.

Back Row: Montgomery, Jaynes, Weese, Milton, Kenny, Rupp, McDowell, Anderson, Lentz.



Front Row: Dusenberry, Hudson, Taylor, Russell, Clemensen, Graf, Fuller, Gross, Jensen, Hebenstreit

Middle Row: Merklin, Harmon, Dahlquist, Walters, Lockhart, Danielson, Ellis, Peterson, Tom, Farrelly.

Back Row: Mathews, Underwood, Rose, Stiles, Graves, Schreiner, Sperber, Blue.



Front Row: Burch, Schiffman, Nieman, Keyes, Porter, McDonald, Williams, Childers, Ponti, Nordheim.

Middle Row: Logan, Cofer, Daniel, Mitchell, Rosqui, Stockton, Clendaniel, McCaw, Brailsford.

Back Row: McCabe, Burkhart, Raess, Gerking, Magnaghi, Gilbertson, Maier, Ruther.





215

Front Row: Oliver, White, Beck, Dixon, Wright, Weidert, Wade, Rehberg, Zier.

Middle Row: Lybecker, Criscoe, Ahandler, Bates, Shock, McKinnon, Romine, Anderson, Clure.

Back Row: Carlson, Musgrave, McBain, Fries, Steinbeck, Till, Holmes, Chase, Kirkpatrick.



301

Front Row: Ward, Shuham, Day, Deck, Strandin, Anderson, Webster, Rondthaler, Whipple.

Middle Row: Stewart, Frank, Stockdale, Smith, Purcell, Lewis, Brailsford, Utter.

Back Row: Ince, Stoll, Stevens, Anderson, Valaer, Harbers, Ritter, Anderson.



307

Front Row: Ringel, Bradley, Hall, Kincaid, Hunter, Lockhart, McEvoy, Jackson, Chisholm.

Middle Row: Hastings, Duckworth, Kingsley, Gwinn, Lepiane, Turner.

Back Row: Bieais, Rimpler, Bennett, Clark, Edinger, Kincheloe, Reihl, Anderson.



315

Front Row: McWilliams, Stanley, Newsom, Zucco, Langton, Benefiel, Elliott, Buerstatte, Hutsell.

Middle Row: McDonald, Hagen, Cook, Brock, Roloff, Harmon, DeBoer, Marcy, Clark.

Back Row: Angell, Sweezy, Cooper, Hertz, Harvey, Frankson, Brown, Ringhoffer, Walton.



BOYS' GYM

Front Row: Underwood, Hankla, Taylor, Walker, Gilmore, Nightingale, Jones, Strampher.

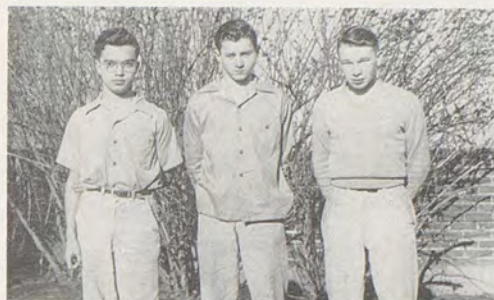
Middle Row: Manuel, Keen, Stokes, Robinson, Elkin, McManus, Burch, Yenny.

Back Row: Bischoff, Harrison, Pallis, Fiedler, Graham, Fulgham, Dement, Burkhart.

FRESHMAN

1ST SEMESTER OFFICERS

Corkrum, Jones, Klicker



2ND SEMESTER OFFICERS

Baxter, Fouts, Klicker



After surviving the first weeks of entering wrong classes, losing themselves in the halls, and generally being pushed around by upperclassmen, the freshmen have come through with an excellent record of achievement.

Officers elected for the first semester were Buddy Corkrum, president; Vernon Jones, vice president; and Don Klicker, secretary-treasurer. Don Klicker, John Fouts, and John Baxter were the second semester leaders. Miss Kirk was freshman adviser.

Jim Kerr and Ted Meinhart were the representatives to Boy's Cabinet. Winnifred Noble and Peggy Benefiel were members of Girls' Cabinet. Serving on Girls' Council were Peggy Benefiel, Wilma Dudley, Winnie Noble, and Peggy Reser. Student court members were Ted Meinhart and Michael Fahey.

Several members of the class placed on the honor roll and two girls, Barbara Berney and Pat Remillard, received straight "A's" for their first quarter's work.

The freshmen lost no time getting into extra-curricular activities. On the staff of the Royal Blue were Lucile Jameson and Etta Boldman. The Journal staff received the assistance of Ronald Martin, Wilma Dudley, Buddy Corkrum, and Tom Elliott. Ronald Martin was one of seven Wa-Hi students who received the Journal Service Award for the year. Freshmen appearing in the all-school play were Craig Esary and Tom Elliott.

Some good entertainment will be in store for the future if the members of the class keep up their good work. Among those appearing in assemblies were Ramon Ross, Pat Remillard, Yvonne Johnson, Lucile Jameson, and Ronald Martin. Several others were members of the chorus groups.

With these achievements credited to them, the present freshman class certainly need not feel inferior to the high and mighty upper-classmen.

Front Row: Kirkpatrick, Schatzel, Laufer, McMann, Daniel, Zier, Huntsman, Entze, Walters, Ward, Kato, Ross.

Middle Row: Tilley, Anderson, Meiners, Mahan, Mayberry, Whiteley, Bates, Pudwill, Heath, Fulkerson, Kelley, Taylor, Cockran.

Back Row: McCulloch, Rease, Molter, Deweese, Allen, Lindsey, Boyer, Blue Kennedy, Kolars.

112

Front Row: Pallis, Russel, Corkrum, Boewer, Lenfesty, Kerr, Gilmore, Nelson, Amo, Stiller, Elia.

Middle Row: Wickizer, Clark, Martin, Bannister, Jones, Zier, Gregg, Lockhart, Knaus, Todorovich, Richmond, Irwin.

Back Row: Brunton, Yoder, Esary, Fouts, Meinhart, Tack, Locati, Harrington, Hergert.

115

Front Row: Grasser, McCubbins, Cowles, Biagi, Borgers, Anderson, Hunt, Bowman, McCabe, McCaw, DeBeaumont.

Middle Row: Fulkerson, Koepke, Palmer, Backtold, Bostwick, Barlow, Kennedy, Felch, Baxter, Wood.

Back Row: Ablott, Mollette, Rink, Webb, Taylor, Cochran, Savage, Elsbree, Young, McFalls, LaCount, Burres.

118

Front Row: Bishop, Linn, Turley, Dudley, Ellison, Petrelli, Smith, Myrick, Hawkins, Willis, Mahan.

Middle Row: Reihl, Edwards, Kramer, Bruce, Woodhall, Davis, Garn, Hatley, Mason, DeVore, Stoneman.

Back Row: Sauer, Butler, Bunney, Cole, Sherwood, Jessup, Erwin, Lindner, Noble, Creek, Benzel.

201

Front Row: Zier, Croft,
Lamoreux, McDuffee, Kelly,
Gilliland, Cannon, Smith,
Henderson.

Middle Row: Sept, Wiley,
Fehrenbacher, Mobley,
Bowers, DeWeese, Phillips,
Levin, Manley, Strozinsky,
Weaver, Remillard, Cauvel,
Ebbert.

Back Row: Griffin, Burgess,
Noble, Reavis, Berney,
Davis, Wenner, Knaus,
Pruitsman, Angell, Collett.



209

Front Row: Walker, Vasile,
Morgan, Ross, Berland,
Clayton, Berreth, Bachmann,
Guinn, Knell, Dirks, Biggs,
McClanahan, Lindelien.

Middle Row: Wallace, Miller,
Chamberlain, Filan, Dahl-
quist, Boldman, Harold,
Foltz, Reser, Paganini,
Jacobsen, DeFord.

Back Row: Wilson, Swegle,
Ray, Craver, Carlson, Cobb,
Livengood, Snowden,
Yeager, Aardal, Jacky, Mc-
Gifford, Noble.



213

Front Row: Grassi, Buer-
statte, Tomlinscn, Butherus,
Peachey, Haines, Larkins,
Harvey, Kenny, Reihl,
Sarver, Frank, Hassinger.

Middle Row: DeGuire, Kral-
man, Shevlin, Dirks,
Rimpler, Newton, Mulhair,
Cochrane, Lindstrom,
Lyman, Casey, McDaniel,
Edwards.

Back Row: Benefiel, Miller,
Wood, Johnston, Jameson,
Danielson, Crawford,
Marshall, Booth, Townsend,
Stiles, Pratt, Kerr.



308

Front Row: Ringo, Klicker,
Arnold, Miller, Couch,
Noland, Bowers, Anderson,
Rawlins, Martin, Deck,
Sullivan, Knight, Skelton,
Bailey, Kincaid.

Middle Row: Moseley, Hass-
ler, Kincheloe, Kralman,
Deffenbaugh, Hamm,
Myers, Twedt, Fahey,
Barer, Donaldson, Jensen,
Russo, Kirby, Berven,
Parker.

Back Row: Loos, Roseberry,
Boldman, Russel, McKillip,
Clark, Elliott, Boher,
Wesser, Lewis, Berry.





Activities



Burton Boylan
Editor

Maxine Lanchester
Associate Editor

Bob Coleman
Business Manager

Madelyn Jameson
Associate Editor

SALES STAFF

Front Row: C. Anderson, Jamieson, Ritter.
Middle Row: Marcy, Kidwell, Ogden, Martin.
Back Row: Boylan, Beeson, Jameson, Coleman.

LEISURE TIME

Lanchester, L. Jameson, Boylan
M. Jameson, Baslee
Mr. Reynolds

THEY KEEP THE RECORD

"Are we going to have an annual?" was the question often asked in the halls of Wa-Hi last fall. Student interest rose to a high pitch, but due to the lack of an adviser and materials, hopes were temporarily blighted. The matter was settled by choosing five faculty members as advisers: Dean Lobaugh, general adviser; Miss Dorothy Allison, make-up; Miss Helen McCormick, sales; Harrison Clark, finance; Allen Reynolds, assisted by two students, Richard Nightingale and Robert Naimy, photography.

Burton Boylan was chosen by the Student Cabinet to act as editor of the Royal Blue, and Robert Coleman was appointed as business manager.

The sales staff was composed of a number of students who willingly offered their assistance. Advanced sales nearly reached the six-hundred mark which guaranteed publication of the annual.

The editorial staff was organized with Associate Editor Madelyn Jameson supervising the art, Associate Editor Maxine Lanchester in charge of the copy, and Phyllis Hart as picture editor. Since Phyllis was unable to continue in this position, Phyllis Kidwell was later appointed picture editor.

The organization was completed without much difficulty, but the production of an annual in war-time was a different story. Although students were eager to begin, nothing else seemed to be.

THEY KEEP THE RECORD

The camera was not available until after the first of January. This meant that many pictures had to be taken on dark and rainy days. (Maybe you can use this as a good excuse for that "horrid" picture of you!)

After the pictures had been received, or were tracked down by our super-sleuth, "Phoebe" Kidwell, the task of mounting them began. Securing the glue for this job was a noteworthy achievement, as a war-time substitute, tried first was unsatisfactory and a requisition was required before any of the original product could be obtained. This shortage didn't seem to affect the members of the staff after they had the glue in their possession, however, for they could frequently be seen peeling the excess glue off their fingers.

Even the printers must have been opposed to the publication of this volume since the firm that has done the printing for several years decided that it could not undertake the work again. (At that, we don't blame them.) After much searching, another printer was secured, but even then the staff did not seem to be able to keep up with the deadlines that were set.

And now, to prevent you from thinking that this is just one long tale of woe, it must be said that some very enjoyable hours were spent within the walls of the staff "hang-out." It has even been hinted that Cupid "hung out" there.

Bob Naimy
Photography

Phyllis Kidwell
Picture Editor

Richard Nightingale
Photography

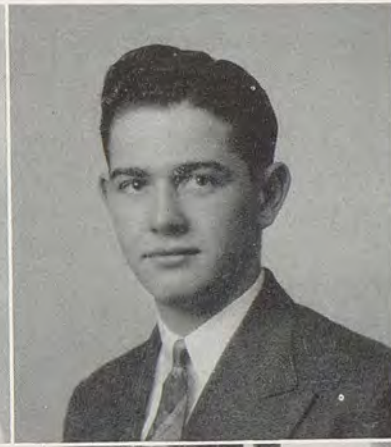
Phyllis Hart
Picture Editor

EDITORIAL STAFF

Front Row: Anderson, Hart, Krebs, DeBoer, Lanchester, York.
Middle Row: C. Anderson, Kidwell, Jameson, Boldman, Ogden,
Livengood.
Back Row: Beeson, Boylan, Daniels.

WORKING TOGETHER

Lanchester Ogden Beeson Boylan
Baslee Jameson DeBoer





James Esary
Editor

Wandalee Fleck
Associate Editor

Carol Morris
News Editor

Mr. Stevens
Adviser

PRODUCTION STAFF

Front Row: Wirth, Stebner, Pauly, Morris.
Back Row: Martin, Beck, Baslee, Mackin, Elliott.

EDITORIAL STAFF

Front Row: Campbell, Finnegan, Ogden.
Back Row: Fleck, Esary, Brown, Stevens.

THEY GIVE US THE NEWS

After a year of successful pioneering in the daily newspaper field, the 1943-44 Daily Journal staff started the year with two objectives: to cover as fully as possible the daily events at Wa-Hi, and to publish a neat and attractive paper. Both aims were satisfactorily realized. For the second year, students received regularly every morning individual copies of the mimeographed publication, small but complete, with news stories, feature stories, illustrations, editorials and entertaining column material.

Edited by James Esary, assisted by Wandalee Fleck, the Journal took a militant stand on student problems. Such matters as student court punishment, school spirit, codes of conduct, and bond sales received editorial comment and publicity enough to influence many readers.

One of the new accomplishments has been the encouragement of use of Journal space as a clearing-house of public opinion, especially through regular appearance of many open letters. A free lost and found service was another benefit possible because of the daily publication of the paper.

The staff has continued to insist that being the official paper of the associated student body, the Journal must be produced by the students, about student activities, in a style acceptable to student readers. This has been accomplished without sacrifice of high journalistic standards, as is substantiated by the high national rating given the paper by the National Press Association.

THEY GIVE US THE NEWS

The Journal was honored by publication in a fall issue of School Life, a national magazine, of a full-page article explaining how the Daily Journal is produced.

Production of the Journal is an all-day task every day, but duties are divided among many staff members. Typists, reporters, stencil typists, machine operators, artists, editors, and others are at work on the Journal every period.

A new award, called the Journal Service Award, was introduced this year. Consisting of a gold pin and a certificate of service, the award is presented by the adviser to staff members doing outstanding work.

Journal staff members for the year included, in addition to the editors: Carol Morris, Marie Campbell, Pat Finnegan, Lois Stebner, John Stephens, LaVonne Buck, Francene Pauly, Willa Dean Ogden, Charlotte Wirth, Shirley Jean Brown, Dave Binder, Anna Marion Beck, Tom Elliott, Phyllis Robinson, Ronald Martin, Phyllis Curcio, Loreda Mele, Helen Garrett, Lee Rounsaville, Eunice Maier, Willis Logan, Charlotte Throop, Mary Lou McKillip, Lawana Mae Pieper, Ethel Mae Allen, Warren Baslee, Everett Skubinna, and Charlotte Lindberg.

Mr. James Stevens is journalism teacher and Journal adviser.

News In The Making

Award Winning Journalists
Morris, Garrett, Robinson, Esary, Martin

New Production Problem

Ye Editor Reflects



THEY TRAIN FOR VICTORY

The military training of Wa-Hi has been intensified this year under the direction of Major Oliver F. Porter and Sgt. Frank H. Rogers. Both indoor and outdoor instruction was given under direct army supervision. Textbooks covering all phases of infantry training and operations were provided in the form of government field manuals. Various equipment was made available by the Walla Walla army air base for training the corps in modern infantry practice.

The up-to-date training proved, to a great extent, to open opportunities to students who left school to take up work in various branches of the armed forces. Motion pictures of selected war subjects became a regular item in the military training. These films were very useful in showing the latest methods and equipment of regular combat use.

Spring found the cadets stressing physical fitness through the commando course in which games, calisthenics, etc., were used. Stress was also placed on developing leadership. The cadet officers received direct instruction from the staff and then were expected to administer their own companies and platoons, passing on instruction and executing maneuvers.

Beginning with 1925, federal inspection of the unit here has resulted in the honor school rating being won in all except two years.

"SGT."

SPONSORS

Captain—Marjorie Zigman
1st Lieutenant—Dorothy Ann Humphrey
2nd Lieutenant—Wandalee Fleck
2nd Lieutenant—Marilyn Corkrum

ADVANCED CLASS

Front Row: Whitely, Fuller, Bennett, Petrelli, Soper.
Back Row: Page, Kessler, Christiano, Gerking, Cummins.

BAND

Drum Major—S/Sgt. Dick Frank
Cadet Band Master—W. O. Bill Bennington
Band Master—Hal Tilley



Company A

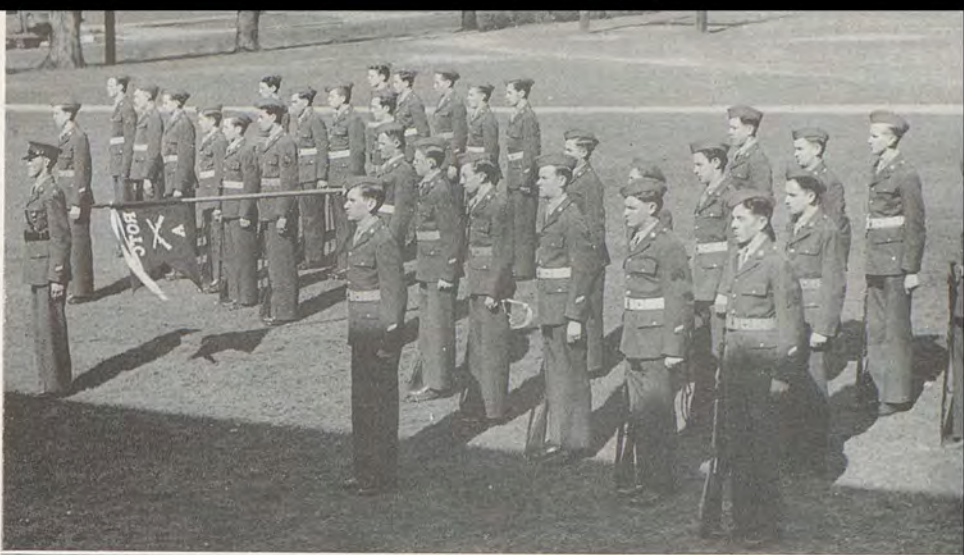
Southern, Boylan, Baslee

Captain—Harold Bishop

1st Lieutenant—
Bruce Southern

2nd Lieutenant—
Burton Boylan

1st Sergeant—Bartain Britain



Company B

Nightingale, Reiss, Van Atta

Captain—Richard Nightingale

1st Lieutenant—Bob Ovens

2nd Lieutenant—
Bill Van Atta

1st Sergeant—John Heath



Company C

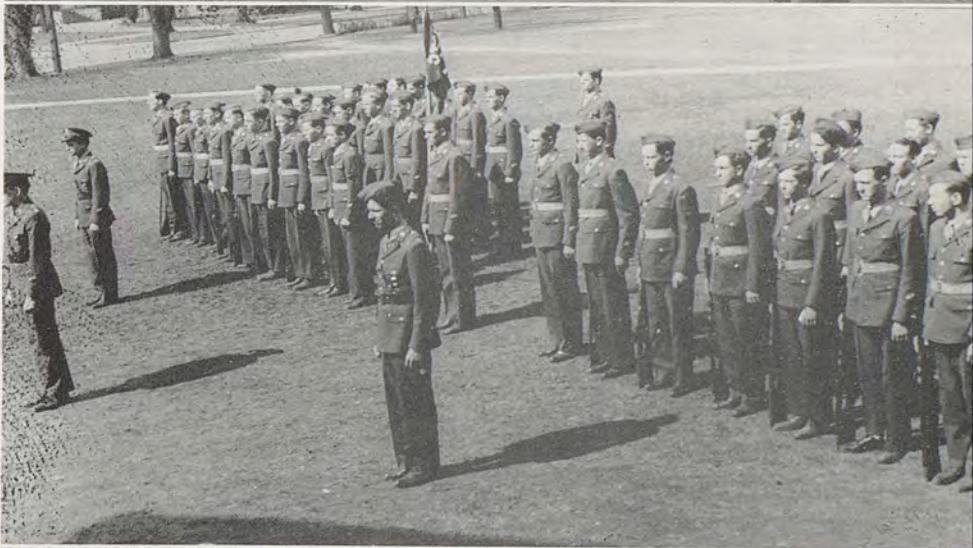
Berry, Maiden, Thirtyacre

Captain—Charles Maiden

1st Lieutenant—Jack Wilson

2nd Lieutenant—
Lynn Thirtyacre

1st Sergeant—Joe Gilliam



Company D

Harding, Burkhart, Myers

Captain—Ray Harding

2nd Lieutenant—
Harold Myers

2nd Lieutenant—Burkhart

1st Sergeant—Bud Pringle



TRAINING THROUGH FUN



GIRL'S RIFLE TEAM

Front Row: Vanderpool, Ringhoffer, Humphrey, Hertz, Chisholm.

Middle Row: Shinbo, Follett, Fairchild, Klaus, Beck, Hopper.

Back Row: Gilkerson, McIntyre, Doyle, Woodworth.



EQUITES

Front Row: Dusenberry, Graf, Corkrum, Campanelli, Frieske, Maier, Drumheller, Miss McIntyre.

Middle Row: Leidl, Jaynes, Coleman, Davis, Beeson, Nightingale.

Back Row: Martin, Bischoff, Graham, Heath, Ellis.



EL ADREA

Front Row: Deck, Hubert, Kimmerly, Mulhair, Day, Wright, Harold, Blackman, Winget.

Middle Row: Ringhoffer, Day, Robinson, Fleck, Allen, Chisholm, Woodhall.

Back Row: Foster, Throop, Winn, Garrett, Rich, Finnegan, Campbell.

KNIGHTS OF THE TRIDENT

Front Row: Heath, Amery,
Skubinna, Jensen, Noland,
Bell.

Back Row: Duckworth,
Wallace, Bramlett, Mc-
Donald, Couch.



F. F. A.

Front Row: Yenney, Nord-
heim, Bauers, Clark, Rose-
berry, McCaw, Williams,
Haun, Strode.

Middle Row: Maiden, Meiners,
Danielson, Walker, Jeglin,
Brunton, Shelden, Myers,
Boldman, Lybecker.

Back Row: McCulloch, Blue,
Deffenbaugh, McInturff,
Zwanzig, Freepons, Martin,
Daniels, Stiles, Smith.



GIMMEL TETH

Front Row: Elliott, Evander,
Mahan, McEvoy, Angell,
L. Mahan, McGifford.

Middle Row: Cannon, Chap-
man, Nordstrom, Buck,
Shuham, McLaughlin,
Lyman.

Back Row: Corkrum, Loney,
Mathison, Humphrey,
Rader, Harvey, Walton.
Croxdale.



SOROMIA

Front Row: Frankson, Reser,
Beck, Jansen, Rimpler.

Middle Row: Stockdale,
Anderson, Ward, E. DeBoer,
Rimpler.

Back Row: Criscoe, Marcy,
Edinger, DeBoer, Beck.



GIRLS' SPORTS

Front Row: Benefiel, Dorsey, Mulhair, Hart, Dahmen, Anhorn, Wirth.

Middle Row: Bulla, Swanson, Burgess, Ritter, Brown, Strandin, Pieper.

Back Row: Bruce, Houghton, Noble, Danielson, Cauvel, Benefiel.



MATH

Front Row: Anderson, Krebs, Lindberg, Holmes, Page.

Back Row: Myers, Cundiff, Dement, Decker.



W. W. CLUB

Front Row: Haas, Plucker, LeRoux, Gilmore, Gilliam, Wood, Frank, Pope, Lindelien.

Middle Row: Anhorn, Myers, Page, Noble, Van Atta, Gehrett, Aiton, Follett.

Back Row: Mitchell, Fouts, Naimy, Walker, Nightingale, Fondahn, Pringle, Turner, Klicker.



OFFICERS' CLUB

Front Row: Wilson, Nightingale, Naimy, Ovens.

Back Row: Van Atta, Southern, Bennington, Berry, Maiden.



Front Row: Storey, Brunton,
Mitchell, Cockran, Willis,
Lindeliën, McKay, Mackleit,
Gump.

2nd Row: Dusenberry,
Plucker, LeRoux, Gilmore,
Gilliam, Woods, Frank,
Bishop, McQueen, Roseboro,
Ablott

3rd Row: Maiden, Roy Bell,
Myers, Page, Noble, Van
Atta, Reynolds, Gehrett,
Aiton, Follett, Klicker,
Beechiner.

4th Row: Ellis, Fouts, Naimy,
Walker, Nightingale,
Fondahn, Pringle, Turner,
Aylward, Ray Bell, Heath.



WA-HI ON THE AIR

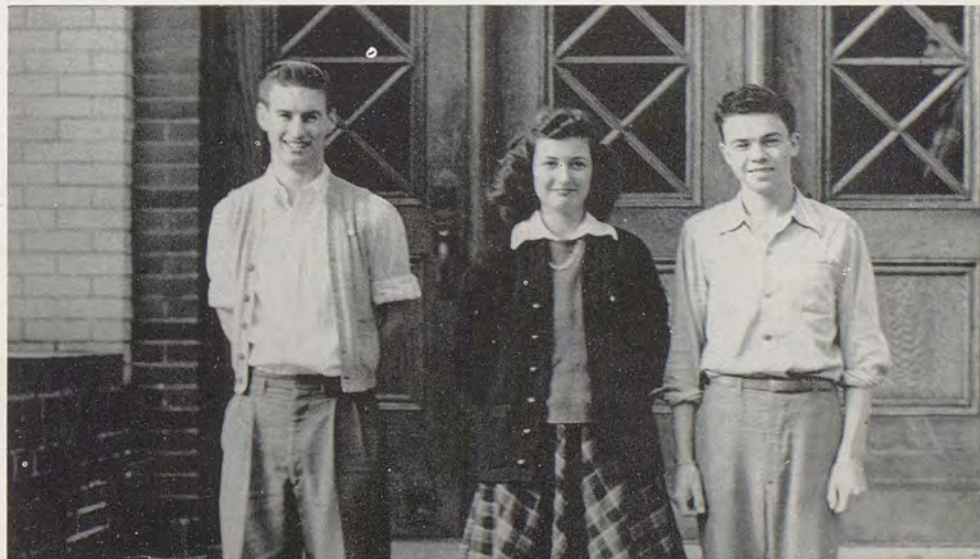
"Good afternoon, radio friends and listeners." The employment of this greeting reminds us that it is Monday, 2:30 p.m., and time for another half-hour broadcast from Wa-Hi.

Emphasis on programs typifying various fields of school work was the keynote this year, with almost every department presenting programs. Serving as announcers were Elaine Cation, Eloise Dorsey, Craig Esary, Charles Hall, Carl Hebenstreit, and "Mac" Michaelis. Newscasters appointed from Miss Meta Pfeiffer's first hour speech class prepared the weekly news features. The technicians, Lee Ashworth, Bob Dunwoodie, Joe Gilliam, and Jack Wilson, also performed their tasks successfully. Miss Mary Yates, chairman of the radio committee, deserves a great deal of credit for her capable supervision of the programs.

Wa-Hi's radio opportunities offer actual experience to young Americans who will inevitably require freedom of expression in a new world of equality and peace. Here, in a small part, is our way of demonstrating how democracy works in high school education.

RADIO ANNOUNCERS

Michaelis, Dorsey, Hall





Wesley Benefiel William Berney Elaine Cation James Esary Wandalee Fleck Neil Follett Rosemarie Hubert
 Phyllis Jansen, Maxine Lanchester, Eunice Maier, Sherman Mitchell, Carol Morris, Joyce Neel, Herbert Nightingale
 Richard Nightingale, Willa Dean Ogden, Marjorie Pifer, Phyllis Robinson, Shirlee Winget, Charlotte Wirth

THEY SET THE STANDARDS

Wa-Hi's National Honor Society is one of more than twenty-five hundred chapters established in high schools throughout the United States.

The purpose of the National Honor Society is to create an enthusiasm for scholarship, to stimulate a desire to render service, to promote leadership, and to develop character in high school students.

The first requirement for membership is that the student shall rank in scholarship in the first third of his class. Membership is further limited as only fifteen per cent of a graduating class may be chosen. A candidate must also fulfill the qualifications for character, leadership, and service to the school. Members of the Wa-Hi chapter are chosen by a faculty committee of nine.

Elections are held twice a year—in the fall and again in the spring when five per cent of the Junior class may be initiated.

First semester officers were Willa Dean Ogden, president; Joyce Neel, vice president; Richard Nightingale, secretary; and Wesley Benefiel, treasurer. Officers for the second semester were Eunice Maier, president; Elaine Cation, vice-president; Rose Marie Hubert, secretary; and Marjorie Pifer, treasurer. The group is advised by Miss Fay Hamm.

Members tapped April 12 were: Hallie Arbogast, Madelyn Jameson, Dolores Loney, Harold Myers, Francene Pauly, Burton Boylan, and Wayne Fondahn, seniors; Irene Krebs, Marie Campbell, Elinore DeBoer, Betty Hopper, Lois Humphrey, Charlotte Lindberg, Joyce Mulhair, Clayton Michaelis, Corleen Sporleder, and Charlotte Throop, juniors.

VOICE, VOLUME, VALUE

GIRLS' GLEE

Front Row: Mang, Dodd, Edwards, Burkhart, McKinnon, Jamieson, Piersall.

Middle Row: Sherwood, Mobley, Hatley, Holderman, Harold, Ogden.

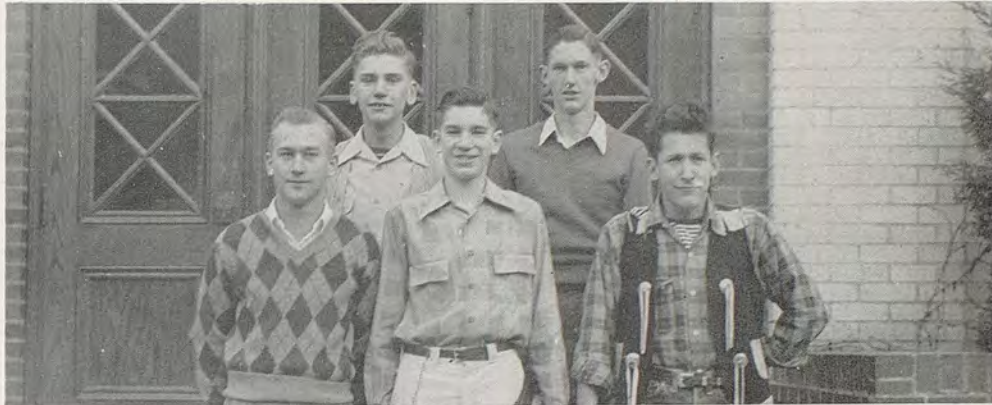
Back Row: Stoneman, Palmer, Davis, McGifford, Chamberlain, Kramer.



BOYS' GLEE

Front Row: Follett, Molter, Bannister.

Back Row: Baslee, Leek.



GIRLS' CHORUS

Front Row: Myrick, Reser, Swegle, Collett, Turner, Haines, Dillon, Lindstrom, McDaniels.

Middle Row: Swesey, Knouf, Walton, Boldman, Jameson, Harvey, Knell.

Back Row: Hamm, Day, Mays, Davis, Pifer, Chernis, Wallace.



A CAPELLA CHOIR

Front Row: Vanderpool, Burke, Weaver, Apple, Pratt, Lindelien, Breyfogle, Beeson, Pollard, Bulla.

Middle Row: Mrs. Maxey, Case, Day, Wright, Smith, Mackin, Teague, Hamilton, Wray, Schaefer.

Back Row: Henline, Lewis, Michaelis, Rehberg, Elliott, Bell, Klavano, Dahlquist, Jackson.



"ARSENIC AND OLD LACE"

Date—March 17, 1944

Director—Meta Pfeiffer

Abby Brewster	Phyllis Kidwell	Mortimer Brewster	Craig Esary
The Rev. Dr. Harper	Tom Elliott	Mr. Gibbs	Everell Cummins
Teddy Brewster	Dick Turbak	Jonathan Brewster	Bob Naimy
Officer Brophy	Duane Gilmore	Dr. Einstein	Ralph Ruff
Officer Klein	Jim Mitchell	Officer O'Hara	David Cobb
Martha Brewster	Francene Pauly	Lieutenant Rooney	Alan Berry
Elaine Harper	Gloria Woodhall	Mr. Witherspoon	Clayton Michaelis

PLAY CAST

Front Row: Ruff, Esary, Woodhall, Pfeiffer, Kidwell, Elliott, Pauly.

Back Row: Naimy, Gilmore, Cobb, Mitchell, Turbak, Berry

Romantic Ain't it?
Hello, Mac

Another one!!!
Boogie Men





She's got him
Rooters
Desperation

To heck with Sinatra

Intelligence???
Guess Who??
Vicious ain't he?

Mr. President
Big business
What am I bid?

HIGHLIGHTS OF THE WEEK

In spite of the difficulties of obtaining outside talent for their assemblies, Wa-Hi students maintained that the "show must go on." Included in the entertainment which they provided for themselves were musicians, magicians, quizzes, open forums, interviews, and snappy bond rallies. The annual Christmas assembly featuring carols and other Christmas music was given by the chorus classes under the direction of Miss Keller. In a lighter vein was the program presented by the faculty. This was an hilarious glimpse into the past which revealed several hidden talents. Outstanding performers from out-of-town were a blind pianist, Miss Rose Resnick, and a clever magician, Bobo.

BOOKS! BOOKS!! BOOKS!!



Burkhart, McIntyre, Duckworth, Henzel, Holderman, Miss Mosely



Oh!! So Many Books

Two of Many Assistants
Griffin, Knouf



Shhhhhh!!!!

THEY ALSO SERVE

ATTENDANCE

Front Row: Sporleder, Dorsey, Benefiel, Woods, Buck, Winn, Hamilton.

Middle Row: Anderson, Brown, Rounsaville, Stalcup, Wright, Reynolds.

Back Row: Bicais, Ritter, Hertz, Perry, Nicewander.

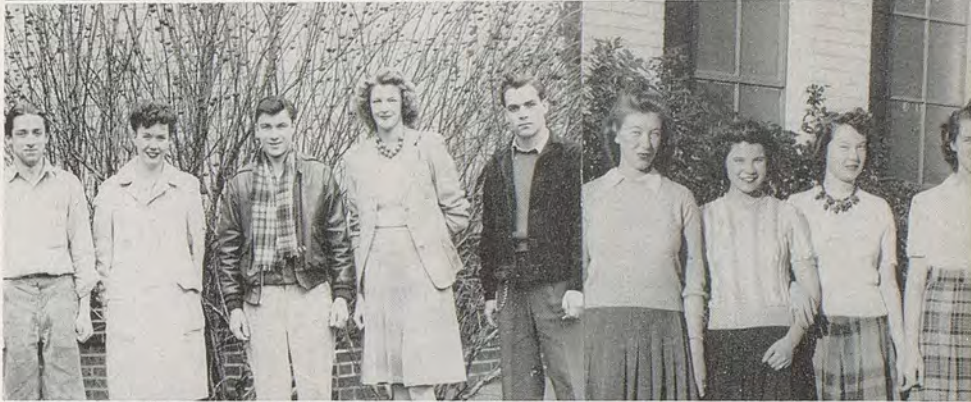


OFFICE HELPERS

Hartley, Stevens, Gehrett, Mackin, Bell.

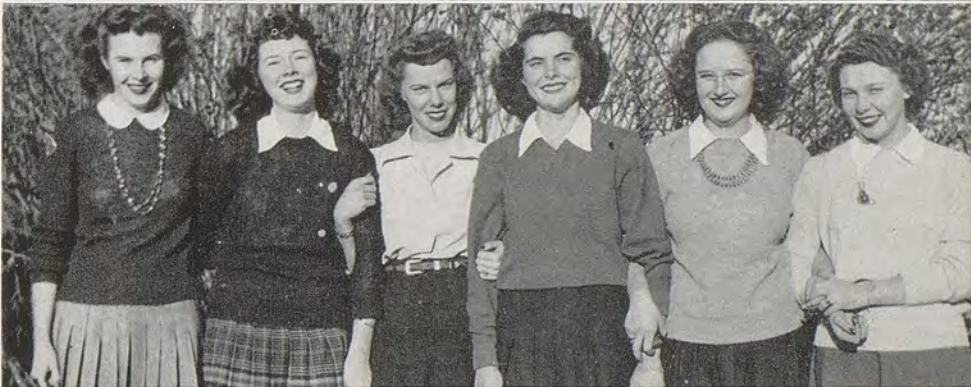
NURSE'S OFFICE

Knaus, Swanson, DeBoer, Mulhair



BOOK ROOM ATTENDANTS

Winn, Buck, Garrett, Bergevin, Ogden, Campbell.



GYM ASSISTANTS

Front Row: Mang, Wirth, Anhorn
Back Row: Apple, Wolfe, Long

MOVIE PROJECTIONISTS

Front Row: Apple, Humphrey, Hopper.
Back Row: Beeson, Coleman, Hunt



IT IS OURS

WA-HIVE

Mayor H. G. West, Phyllis Robinson,
Dean Gehrett, John Herring

John Herring, Irene Sept,
Roberta Tomlinson

The Game Room

The "Gossip Room"

The Snack Bar

The Dance Floor





SO2—Phew

Now It's This Way——
Yum Yum!!

Darn That Schedule!!

Stooge

Long Story

Oowww!!!

Blow, Gabriel, Blow!

Listen, the Wind

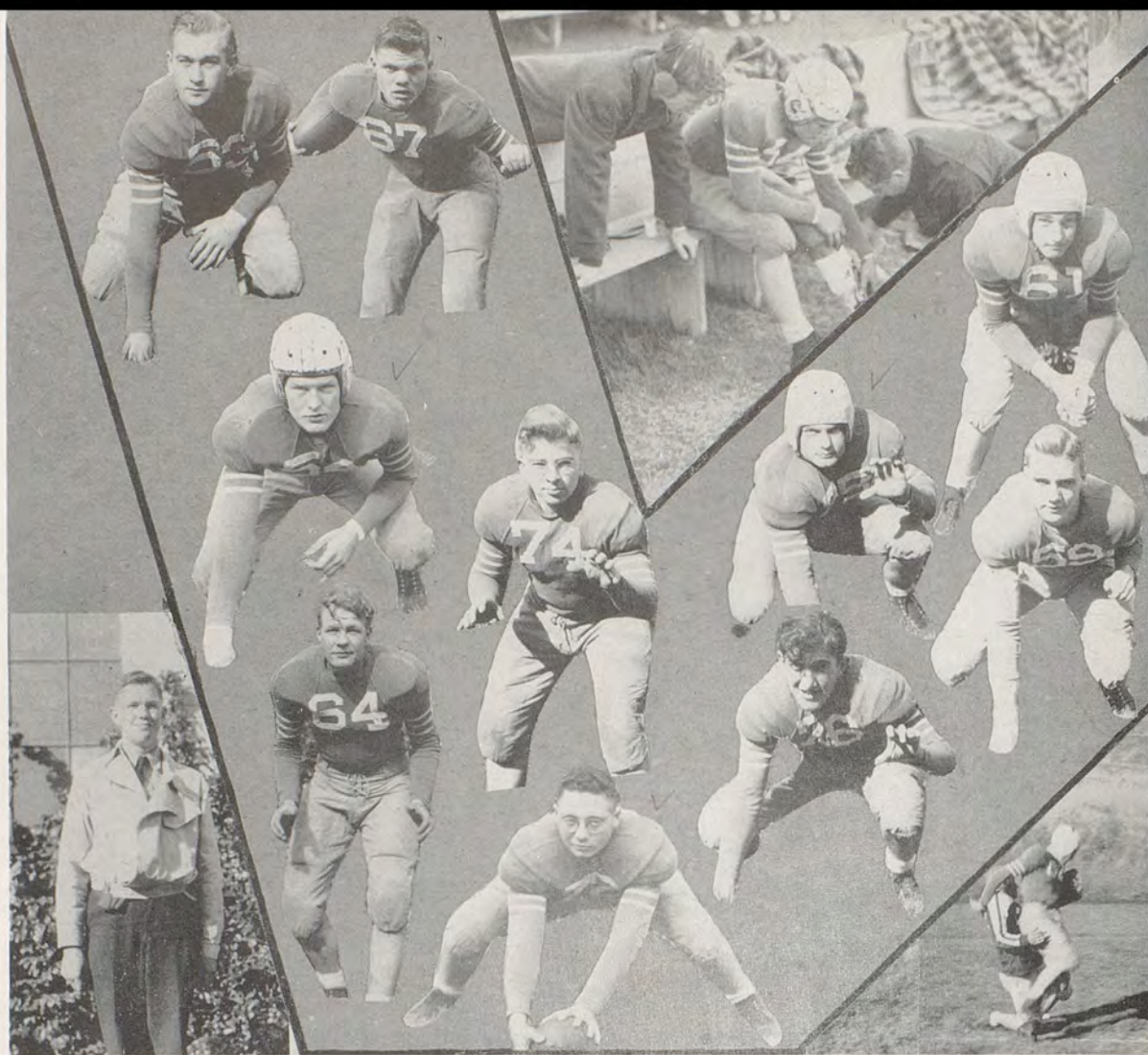
Gruesome Twosome

Humans!??
Struttin' Their Stuff

Good Little Girls
See What I Got!!



Sports



Follett Gilliam
Van Atta

Kenney

Fouts

Arthurs

Gilmore

Plucker

Naimy

Page

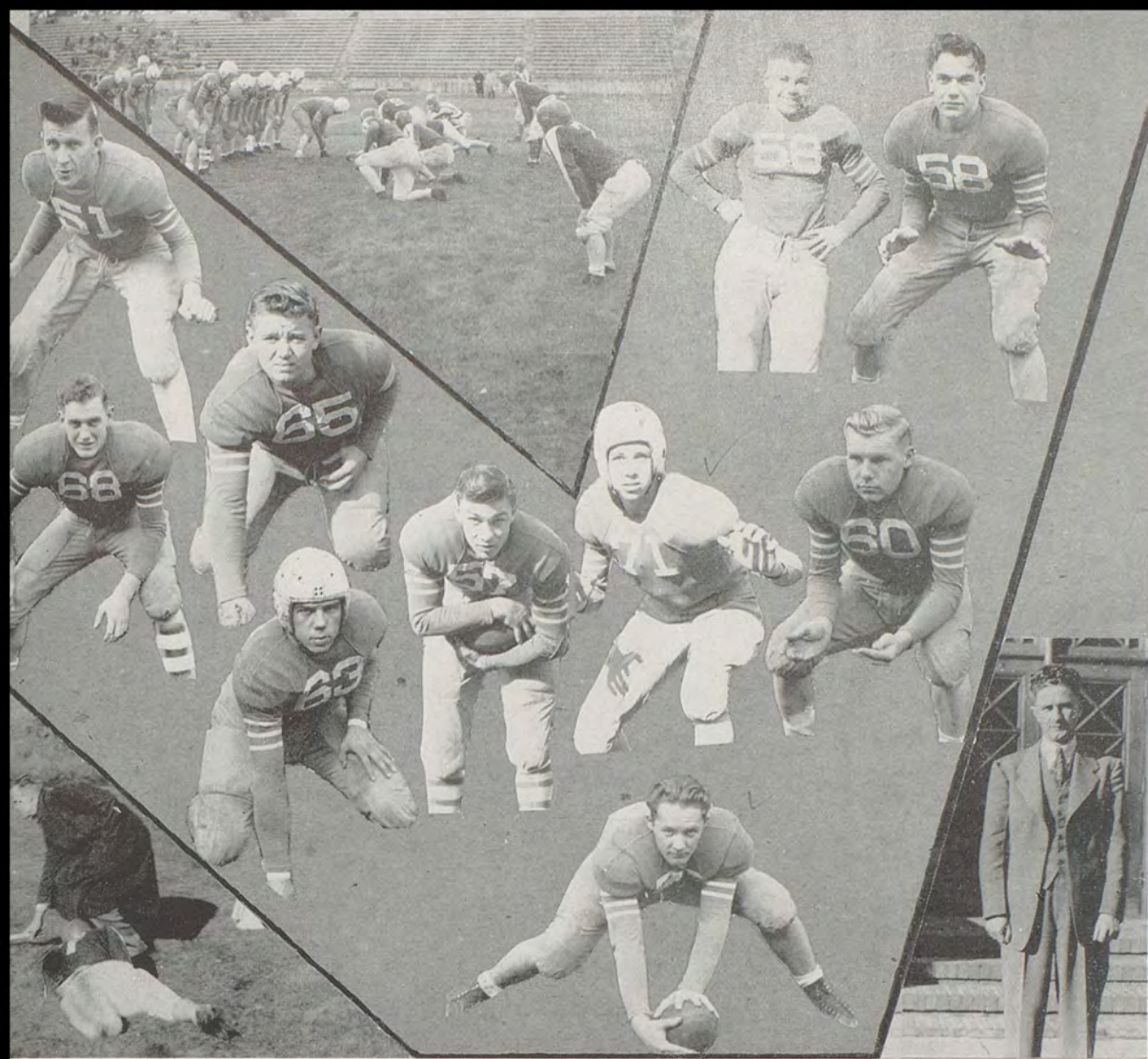
Bishop

FOOTBALL

The football team of 1943 proved to be one of the best. The team of seniors and juniors was keyed to high standards by Captain Dick Turbak's fiery spirit. Although the team missed rugged John Stephens, Alan Berry did much to account for Wa-Hi's effective aerial attack and to outflank hostile end runs. The team benefited by the good solid weight of the tackles, Jack Ablott and Bob Naimy, who with Dick Turbak and Bill Van Atta opened many holes in the opposition. Dean Gehrett, the speedy fullback, and Dean Eggers, the triple-threat quarterback, the latter often named by sports writers as one of the best in the state, consistently made gains in yardage. Bob Klicker showed up as a broken-field runner.

Dave Binder, the blocking halfback was one of the most valuable men on the team. The juniors gained much experience in the "43" pigskin season and offer a bright outlook for Wa-Hi in 1944.

The squad was coached by Bruce "Buck" Blair, an excellent coach, and a friend of the boys.



Binder

LeRoux

Anhorn

Bell

Berry

Turbak

Gehrett

Walker

Klicker

Woods

Mr. Haase

FOOTBALL

The contests of the current season were better attended than those for several preceding years, the average attendance being estimated at two thousand. The scores, although marred by one defeat at the hands of Mac-Hi, are a pleasant reminder of the 1943 season. A return game with Mac-Hi was forfeited to the Blue Devils, 1-0. Scores are as follows:

Wa-Hi	0	Mac-Hi	2
Wa-Hi	6	Lewis and Clark	19
Wa-Hi	20	Pendleton	7
Wa-Hi	38	Baker	0
Wa-Hi	25	Dayton	6
Wa-Hi	33	Clarkston	0
Wa-Hi	64	Central Valley	0
Wa-Hi	1	Mac-Hi	0
Wa-Hi	7	Lewiston	7
Wa-Hi	27	The Dalles	7



BASKETBALL

(Opposite Page) Mitchell, Gilliam, Plucker, Berry, Gehrett

Froshers: In front—Deck, Arnold

B Squad:

Front Row—McCabe, Laufer, McMann, Martin,
Taylor, Fouts, Meinhart, Fahey, Emigh.

Front Row—McDonald, Nightingale, Fuller,
Childers, Roseboro.

Back Row—Heath, Jones, Couch, Hastings, Ab-
lott, Jensen, Fulkerson, Kerr.

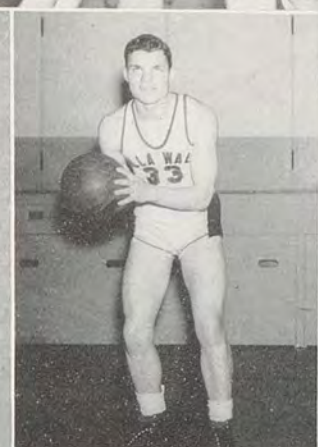
Back Row—Wheeler, Rosqui, Stockton, Gilmore,
Dement, Mitchell.

Bell, Fondahn, Heath, Aiton, Nightingale

A Squad:

Front Row—Wheeler, Bell, Gehrett, Gilliam,
Aiton, Dusenberry.

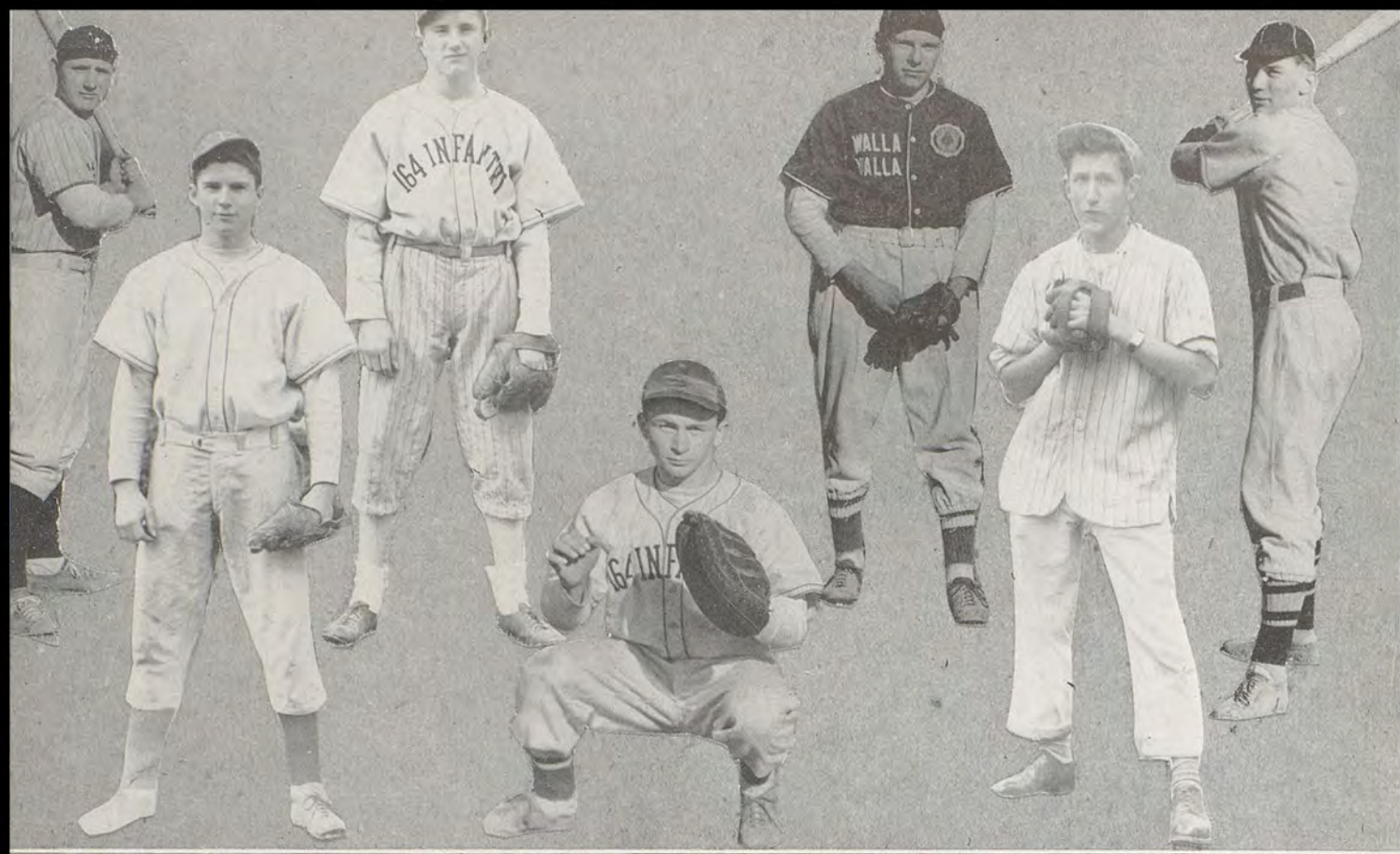
Back Row—Plucker, Mitchell, Nightingale,
Heath, Berry, Fondahn.



BASKETBALL

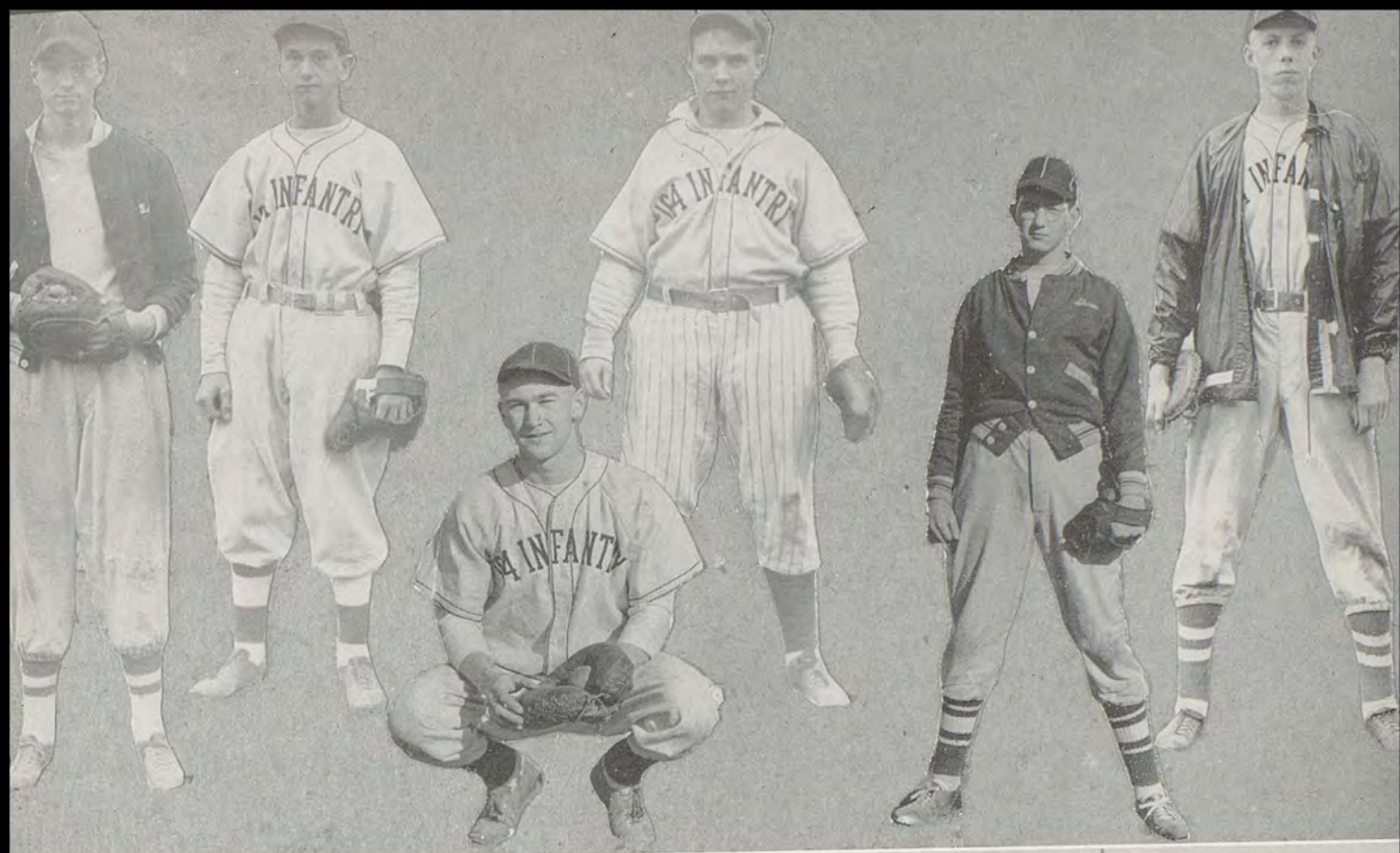
December 3	Wa-Hi 25	*Dayton 18	January 21	Wa-Hi 32	Lewiston 29
December 7	Wa-Hi 34	Prescott 27	January 22	Wa-Hi 36	Lewiston 30
December 10	Wa-Hi 25	Mac-Hi 22	February 4	Wa-Hi 30	Yakima 39
December 11	Wa-Hi 32	LaGrande 26	February 5	Wa-Hi 29	Yakima 44
December 17	Wa-Hi 40	*Clarkston 25	February 8	Wa-Hi 28	Mac-Hi 34
December 18	Wa-Hi 38	*Clarkston 25	February 11	Wa-Hi 33	*Lewiston 29
December 28	Wa-Hi 34	*Mac-Hi 24	February 12	Wa-Hi 31	*Lewiston 21
December 30	Wa-Hi 37	*LaGrande 24	February 18	Wa-Hi 50	*Prescott 21
January 7	Wa-Hi 20	Dayton 32	February 22	Wa-Hi 39	*Dayton 27
January 11	Wa-Hi 35	*Mac-Hi 29	Tournament	Wa-Hi 33	Connell 22
January 14	Wa-Hi 65	*Pendleton 28	Tournament	Wa-Hi 37	La Crosse 30
January 15	Wa-Hi 53	*Pendleton 25	Tournament	Wa-Hi 30	Colfax 45
January 20	Wa-Hi 33	Clarkston 23			

(* indicates home games)



BASEBALL

Only a handful of boys remain from one of the great teams of Wa-Hi history, the 1943 baseball team that won 17 of 21 games, including three straight from Stadium of Tacoma for the Cross-State League championship. Those few boys, including regulars Bob Klicker and Wayne Fondahn, are determined to carry on the great tradition, and under the leadership of Coach Wheeler, face an eighteen-game schedule, meeting Lewiston, John Rogers, Yakima, Clarkston, Prescott, and Dayton. Practice games saw the following boys making the starting line-ups: Myers, Mitchell, Follett, Fouts, Bannister, Fiedler, Heath, McInturff, Reavis, Klicker, Frank, Pope, Roseboro, Fondahn, Maiden, Plucker, Gilliam, Ruff, Decker, and Gump.



BASEBALL

(Opposite Page)
Reavis

Maiden

Roseboro

Myers

Klicker

Bannister

Fondahn

TRACK SQUAD

Front Row: Webb, Brunton, Jones, Lenfesty, Deck, Booher, Kincheloe, Twedt, Kerr.

Middle Row: Schiffman, Dement, Walters, Ellis, Nightingale, G. Brunton, Meinhart, McKay, Ross, Michaelis, Campbell.

Back Row: Drumheller, Barrows, Nelson, Aiton, Klicker, Gehrett, Mr. Haase, Ablott, Naimy, Smedes.

Fouts

Frank
Follett

Pope

Mitchell

Heath

BASEBALL SQUAD

Front Row: Myers, Follett, Plucker, Gump, Fulgham, McInturfi, D. Frank, G. Frank, Klicker, Fondahn.

Middle Row: Bannister, Liedl, Jeglin, Walker, Decker, Fiedler, Duckworth, LeRoux, McCaw, Reavis.

Third Row: Fuller, Matthews, Burkhart, Jensen, Skubinna, Cofer, Gilbertson, Bennett, Pope, Mitchell, Roseboro, Heath, Wheeler.

INTRAMURALS

The intramural sports of Wa-Hi have provided a lot of fun and enjoyment for the boys and girls who were unable to take part in the big league sports.

The main sports played are, for the boys, basketball, football, track, ping-pong, volleyball, and softball; for the girls, volleyball, basketball, ping-pong, badminton, and tennis. Girls' teams are organized by homerooms and combinations of homerooms while the boys' homerooms have formed teams known as Panthers, Daredevils, Eagles, etc. Much keen competition has arisen between these groups.

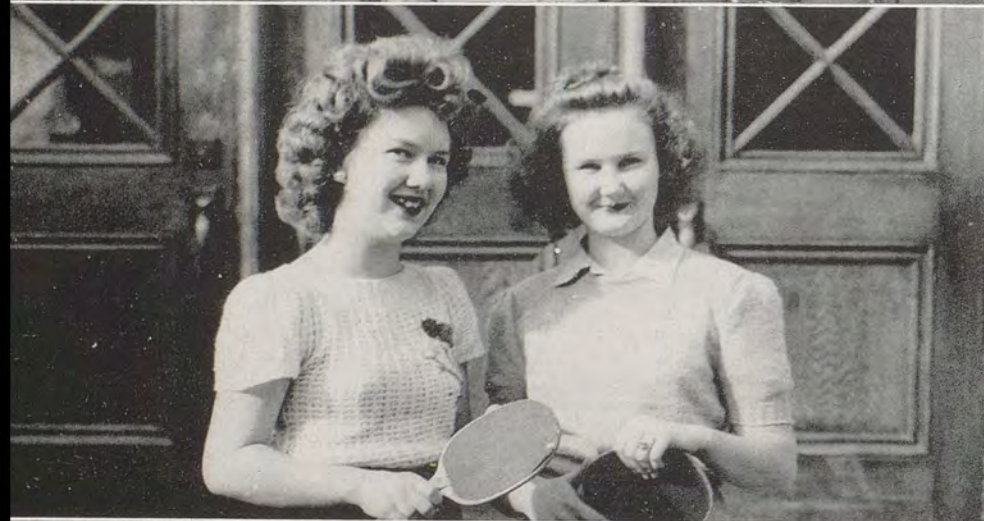
Mrs. Houghton was in charge of the girls' intramurals while the boys were supervised by Mr. Clark and student manager, Bob McQueen.



BADMINTON CHAMPS

Front Row: Altergott,
Dodd, Page.

Back Row: Long, Dorsey,
Chase.



PING PONG

Altergott, Dodd



BASKETBALL

Front Row: Long, Altergott,
Anhorn.

Back Row: Dorsey, Stock-
dale, McLaughlin, Ritter.

INTRAMURALS

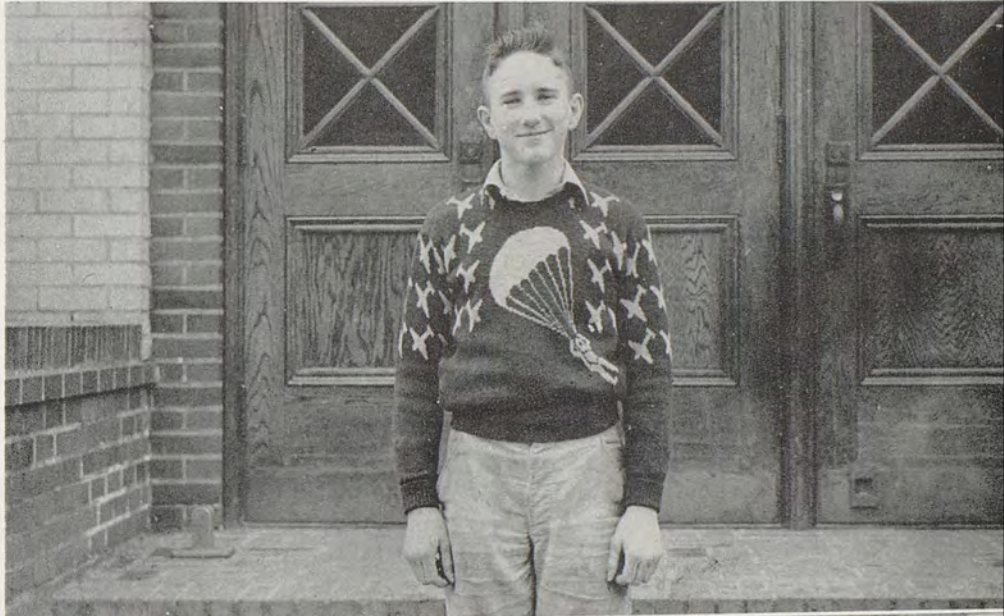
VOLLEYBALL CHAMPS

Burkhart, Ablott,
Whitely, Fondahn,
Bennett



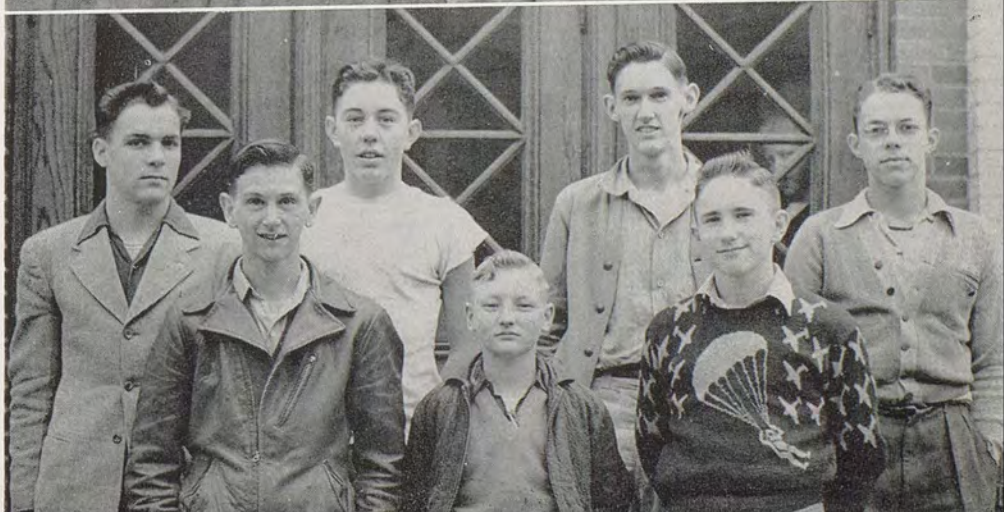
PINGPONG CHAMP

Stanley Roseboro



FOOTBALL CHAMPS

Bell, Frank, Duck-
worth, Lindeilen,
Leek, Roseboro,
Bramlett



Dead Eye

Bored?

It Must Be Funny!

Results

"Stevie"

Chunk

Strictly Posed

Messy

Genius at Work

Smiles

Down and Out

Pretty Please

Industry

BOXING SQUAD

Front Row: Myers, Schatzei, Lockart, D. Frank, Haas.

Middle Row: Rupp, Danielson, Cofer, Wood, Locati, Bell

Back Row: Meiners, Turner, Aylward, G. Frank.





Hic

Contact?

Missin'

Distress

Gosh!!

The Long & Short of it!!

Guess Who????

Oh! My!

Spectators

Sketchin'

Short aren't they??

Mysierey Man

Phhht!!!!

The Sheik

Gang's All Here

Ouch!!!

Hold Still

Industry

Well Daisy June!!

Busy Bees

Carpenters De Luxe

Heavy??

Business with a future

Leasure

Daddy's little helpers

Masterminds

Future Craftsmen

Fake

Wow!!

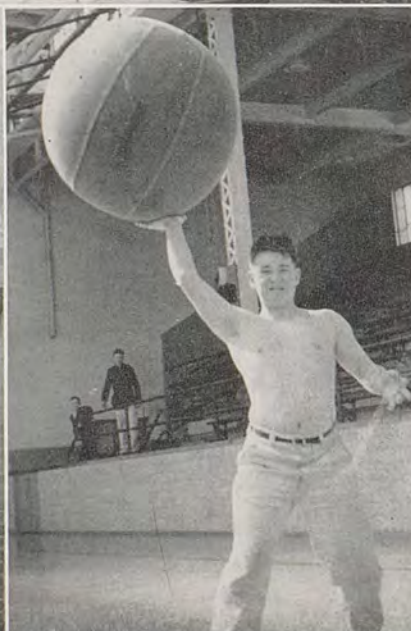
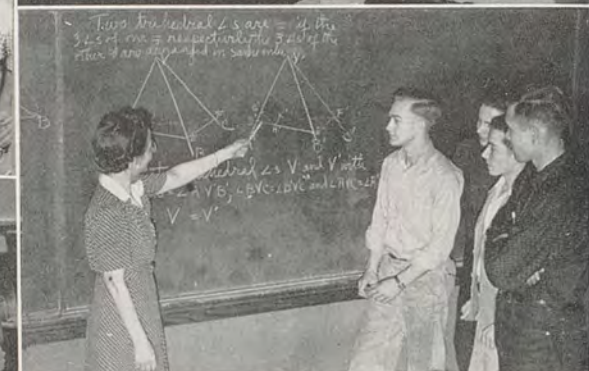
Front Row: Zier, Lenfesty, Reichert

Fencing Squad

Back Row: Hastings, Cofer, Clark

Seawell, Harvey, Longmire, Auld,

Jaynes, Ringhoffer





Is that Good??

Jeannie & Neil

Ag. Boys

Hold It!!!!

What are you so sour about???

2+2=5

And then all the little atoms—

None built for two

Fast Kids

Batter-Up??

Speed

Out at last

Slave labor

School's out???

The Pause—

And Then—

Campin'

Graceful???

Strong????

Free once more!!

Yum Yum!!!

Technical

Who's Feedin' Who?



COMPOSITE CALENDAR

- September 13 Today 1007 students begin the grind of another school year.
- 17 We play our first football game today against Mac-Hi.
- 20 Girls' Federation has a party for the new girls.
- 22 Student Cabinet is introduced in the first assembly of the year.
- 29 Bob Naimy gives his pants for his country in the bond assembly.
- October 9 Wa-Hive, the students' own club, opens.
- 25 Miss Rose Resnick, blind pianist, entertains students in assembly.
- 26 Happy day! Teachers go to school but students don't.
- 27 Royal Blue staff is appointed.
- 29 All the old rags come out of hiding for the Girls' Federation Hard Times party.
- November 3 New N.H.S. members are tapped.
- 11 Students are dismissed for Armistice day parade. Football game with Lewiston.
- 19 F.F.A. Barn Dance is tonight.
- 26, 27 Students are thankful for Thanksgiving vacation.
- December 1 Parents come to Open House to see what students have been doing. Oh-oh!
- 3 Contest with Dayton opens the basketball season.
- 9 First varsity smoker is held.
- 22 Christmas assembly is presented by the chorus groups.
- 23, 24 Santa Claus comes to town, so Wa-Hi students take a holiday.
- 29 Twenty-five per cent of the students are absent when flu epidemic hits town. (At least its a good excuse, isn't it?)
- January 5 Students discuss the curfew in an open-forum assembly.
- 18, 19 Semester exams make students suffer.
- 21 Last day of the first semester. Half the year is gone, isn't that grand?
- February 1, 2 Students dig deep and raise over \$30,000 in war bond assemblies.
- 3 Girls' Federation gives party for new Wa-Hi girls.
- 14 Students' petition against curfew goes to Mayor.
- 17 At last teachers are mystified! Bobo presents only pay assembly of the year.
- 22 Half-holiday at school. Basketball game with Dayton provides entertainment.
- 23 Ralph Ruff sings (?) for boys and then makes girls swoon!!
- 25 Girls' Sports Club presents its annual Sadie Hawkins dance.
- March 3, 4 Basketball team goes to the District Tournament at Colfax.
- 10 Teachers give glimpse of their wild and wicked pasts in assembly.
- 17 St. Patrick's day brings forth numerous bits of green. It also brings forth the all-school play, "Arsenic and Old Lace."
- 24 The class of '45 holds its Junior Prom in the Girls' Gym, with Maryalis Anhorn as queen. Utopia, in case you're interested, can be found at Longitude 45, Latitude 24.
- 31 Today is the day of the all-school Arabian Nights carnival.
- April 1 Wa-Hive reopens after a spring cleaning.
- 12 Students hold breath in assembly while new N.H.S. members are tapped.
- 12 Tonight is the Senior Tea. Everyone is all dressed up, but—their rayons are dripping!
- 14 Mac-Hi holds its annual Carnival of Speed.
- 26 Students from all the nearby schools wander our halls while those of us who are not in the Music Festival sit in class and study (?).
- May 3 Freshmen girls hold their Big and Little Sister party.
- 5 Military Inspection and Play Day. That is a beautiful sunburn you have!
- 17 Senior class puts on final assembly of the year.
- 18, 19 Senior Exams. Woe is us!!
- 22, 23, 24 Semester Exams—worse luck!
- 25 Commencement. The Seniors **big** day!
- 26 Students sigh with relief. Today is the last day of school.

ACKNOWLEDGEMENTS

Walla Walla Union-Bulletin

Western Engraving & Colortype Co.

Baslee's Book Mfg. Co.

